

LIVE THE
SEA-DOO[®]
LIFE



Genuine Parts | Accessories | Apparel

What is the Sea-Doo Life?

We're happy as a clam at high tide that you asked! It's simple, really.

We like to think of it as a state of mind to level up the everyday. A cannonball off the diving board to disrupt the "meh," if we may. It's bright like the sunshine and bold like the box jellyfish. To Live the Sea-Doo Life is to be friendly and free—it's a day at the beach, after all. And remember: it doesn't always have to make sense, it just has to be fun.



Show us how you
Live the Sea-Doo Life
using hashtag #seadoolife

  @seadoo



There's no one way to Live the Sea-Doo Life.

For some, it's taking the pup out for an afternoon on the water down under. For others, it's going wild, ripping around a glacial pool in Norway. It's clear there's just one requirement to Live the Sea-Doo Life: **have fun!**

RXP-X

Ultimate Racing Watercraft



Make every ocean a circuit and every lake a launch pad with one of the fastest performance models in the game. Where there's water, you can conquer with the powerful and agile RXP-X.

FISH PRO

A New Perspective on Fishing



You don't need to cast your net wide to find the best model for your fishing needs. Discover what's deep down there with the clever, versatile and performance-packed FISH PRO. Featuring the NEW iDF (Intelligent Debris Free Pump System).

GTX LIMITED

The Standard for Touring Performance



Whether it's a short ride or a day trip, master the art of relaxation on the highest standard of comfort. Stay balanced and keep on exploring with the irresistibly luxurious and steady GTX. Featuring the NEW iDF (Intelligent Debris Free Pump System) and the NEW Full Color LCD Display Bluetooth and smartphone connectivity.

Family Fun

- p. 6 LinQ Box
- p. 8 LinQ Retractable Ski Pylon
- p. 9 Wakeboard Rack
- p. 10 BRP Audio-Portable System
- p. 20 Snap-in Fenders
- p. 20 Snap-in Fenders Installation Kit



GTI SE 3up

Connected Comfort

- p. 5 LinQ Base Installation Kit
- p. 6 LinQ Box
- p. 7 Front Storage Bin Kit
- p. 9 Boarding Step
- p. 10 BRP Audio-Portable System
- p. 10 BRP Audio-Portable System Support Base
- p. 12 Ergolock Knee Pads
- p. 12 Angled Gunwale Footrests
- p. 13 Mirrors
- p. 13 Comfort Seat
- p. 15 Handlebar with Adjustable Riser
- p. 15 Extended Range Variable Trim System
- p. 20 Snap-in Fenders



SPARK 3up

Agility Performance

- p. 5 LinQ Base Installation Kit
- p. 6 LinQ Watertight Bag
- p. 9 Boarding Step
- p. 10 BRP Audio-Portable System
- p. 10 BRP Audio-Portable System Support Base
- p. 12 Angled Gunwale Footrests
- p. 12 Floorboard Wedges
- p. 20 Snap-in Fenders
- p. 51 Pro-Series Sponson Kit
- p. 51 Front and Rear Deck Hardware Upgrade Kit
- p. 51 Main Deck Hardware Upgrade Kit



SPARK TRIXX 2up

Ready-to-Rev

- p. 10 BRP Audio-Premium System
- p. 13 Passenger Seat
- p. 14 LinQ Fuel Caddy
- p. 15 Adjustable Riser
- p. 20 Snap-in Fenders
- p. 20 Snap-in Fenders Installation Kit



RXP-X 3up

Watersport Thrills

- p. 6 LinQ Box
- p. 7 Removable Storage Bin Organizer
- p. 9 Wakeboard Rack (Additional)
- p. 10 BRP Audio-Premium System
- p. 12 Ergolock Knee Pads
- p. 20 Snap-in Fenders
- p. 20 Snap-in Fenders Installation Kit



WAKE PRO 230

Fishing Configuration

- p. 4 Cup and Rod holder (Right)
- p. 4 LinQ Cup Holder
- p. 5 LinQ 4.2 US Gal (16 L) Cooler
- p. 10 BRP Audio-Premium System
- p. 16 Heated Grips
- p. 17 Garmin ECHOMAP Plus 62cv GPS
- p. 20 Snap-in Fenders
- p. 20 Snap-in Fenders Installation Kit
- p. 20 Sea-Doo Speed Tie



GTX 3up

1-Year Warranty*

- ✓ Genuine BRP Parts and Accessories installed by you or your authorized BRP dealer
- ✓ BRP Apparel
- ✓ Aftermarket products sold by BRP

Also, finance your Parts, Accessories and Apparel together with your Sea-Doo watercraft, and enjoy your rides to the fullest right from the start.

Get all the details from your Sea-Doo dealer.

*Purchased at an authorized BRP dealership/distributor or on a BRP-authorized online store. Unless otherwise stipulated or required by law. Other exclusions may apply. See complete limited warranty or contact your authorized Sea-Doo dealer. This limited warranty does not apply to factory installed accessories. This limited warranty does not apply to Evinrude parts and accessories.



Shop the complete Sea-Doo Experience online.



Instantly view your dream Sea-Doo as you build it.



Watch our videos to learn more about Apparel and Accessories.



Products in this catalog will be available for purchase at your authorized Sea-Doo dealer and online at store.sea-doo.com starting November 2020. For advertising purposes, some scenes depicted in this catalog include professional riders and operators executing maneuvers under ideal and/or controlled conditions. Do not attempt any of these or any other risky maneuvers if they're beyond your level of riding ability, as well as your understanding and respect for the performance of your Sea-Doo watercraft. RIDE SMART FROM THE START. Always ride responsibly and safely. Follow all instructional and safety materials. BRP recommends a minimum operator age of 16 years old for riding a watercraft. Always wear appropriate protective clothing for your type of boating use, including a Coast Guard approved life jacket. Always remember that riding and alcohol/drugs don't mix. Operate your watercraft keeping a safe distance between yourself and others. Always observe applicable local laws and regulations. Because of its ongoing commitment to product quality and innovation, Bombardier Recreational Products Inc. (BRP) reserves the right, at any time, to discontinue or change specifications, prices, designs, features, models or equipment without incurring any obligations. Some models depicted herein may include optional equipment. Prices are based on Manufacturer Suggested Retail Prices. Dealers may sell for a different price. For Canada and US, taxes are not included. Depending on location, products are distributed by BRP US Inc., Bombardier Recreational Products Inc., BRP European Distribution SA, BRP Australia Pty Ltd., BRP Finland Oy, BRP Japan Ltd., BRP Comm & Trade (Shanghai) Co Ltd. or Bombardier Recreational Products Motores da Amazonia Ltda. ® are registered trademarks and TM and the BRP logo are trademarks of Bombardier Recreational Products Inc. or its affiliates. * is a trademark of Bombardier Inc. used under license. Velcro is a registered trademark of Velcro Industries. Bluetooth is a registered trademark owned by the Bluetooth SIG, Inc. Garmin and ECHOMAP are trademarks of Garmin Ltd. or its subsidiaries. GTX is a registered trademark of Castrol Limited, used under license. YUASA is a registered trademark of YUASA Batteries Inc. NGK is a registered trademark of NGK Spark Plugs, Ltd. Salt-Away is a trademark of Salt-Away Products. All other company and/or product names are trademarks of their respective holders. © 2020 BRP Inc. All rights reserved.

Apparel safety rules and recommendations

You and your passengers are required to wear an approved personal flotation device certified for use with a personal watercraft.

Wearing a neoprene wetsuit or bottom will provide adequate protection to the lower part of the body, unlike normal swimwear. You can suffer severe internal injuries if water is forced into a lower body cavity as a result of falling in the water or being near the jet thrust nozzle.

Finally, extra protective equipment such as footwear, gloves and goggles is also recommended.

You can find all of these items at an authorized Sea-Doo dealer or online at store.sea-doo.com.

Fish and Fun

Fast. Easy. Secure.

Nothing outdoes our exclusive quick-attach, toolless rear-cargo LinQ System. It redefines what your watercraft can carry, and how it carries them. You get to pack more, play more, and ride farther, all while keeping food and drinks cold and fresh.

LinQ

SYSTEM™



LinQ™ 13.5 US gal (51 L) Cooler

- Weather-resistant, high-volume cooler.
- Rotomolded construction for exceptional rigidity and durability, and premium-quality foam insulation for optimal ice retention.
- LinQ Locking Anchor Base Kit (295100858) is required for installation on 2018 models and on some 2019 models.
- If your watercraft is not equipped with a ladder, adding one for easy reboarding is recommended.
- Cooler does not fit with LinQ ski pylon when in forward position.

RXT, RXT-X, GTX, GTX Ltd, WAKE PRO (2018 and up) / RXP-X (2021) / GTI, GTI SE, GTR, WAKE (2020 and up) / FISH PRO (2019 and up)

269800943

\$829.99



- 1 Recessed Work Surface** ~ Provides an ideal location to open your tackle boxes and attend to your rod.
- 2 Drain Plug** ~ At the end of the day, use one of two drain plugs for easy draining and to lighten the weight at the rear.
- 3 Fish Ruler** ~ Molded into the cooler lid, you can quickly validate the size of your fish.
- 4 Heavy-Duty Storage Pocket** ~ Use to store tackle boxes and soft baits.
- 5 Angled Trolling Slots** ~ Set your rod at the perfect angle to troll two lines at the same time (if local regulations allow).
- 6 Cup and Rod holder slotted Bars** ~ Cups holders and Rod holders can simply be added and easily moved to different locations around the cooler (Rod and Cup holder sold separately).

NEW

LinQ 51 L Cooler Extension

- Add 5.3 US gal (20 L) of extra storage to your existing 13.5 US gal (51 L) cooler.
- Fully insulated and easy to install.
- Ideal, e.g., for separating your lunch from your catch or adding a separate tackle box.

295100888

\$274.99



NEW

LinQ Front Supports

- For adding an extra Rod holder up front for trolling while on the move.
- Also features area for integrating a LinQ Cup Holder (295100935).

RXT, RXT-X, GTX, WAKE PRO (2018 and up) / FISH PRO (2019)

295100948 (Left),
295100949 (Right)

\$24.99



NEW

LinQ Cup holder

- Cup holder fits most beverage containers thanks to flexible fins that adjust to size of beverage.
- Can be installed on the 13.5 US gal (51 L) cooler or on the Cup and Rod holder front supports.
- Toolless installation.

295100935

\$34.99





LinQ Base Installation Kit

- Allows you to install LinQ mounted accessories on your Sea-Doo watercraft to extend cargo options and journey opportunities.
- Allow the installation of LinQ accessories to the back of your watercraft.
- Not compatible with the LinQ 13.5 US gal (51 L) Cooler.
- Includes 2 LinQ bases and hardware.
- If your watercraft is not equipped with a ladder, adding one for easy reboarding is recommended.

**GTI, GTS, GTR (2011-2019) /
GTR-X (2017-2019) / RXP (2012-2020)**

Note: Not compatible with rear Speed Tie.

295100803

\$77.99

GTX (2016-2017) / RXT-X (2016-2017)

295100842

\$77.99

SPARK 2up

295100883

\$77.99

SPARK 3up

Note: Not compatible with the Tow Pro (295100605).

295100802

\$77.99



Note: LinQ Base Installation Kit is required to install LinQ accessories when not standard on the watercraft.

LinQ Rod Holder

- Features quick attachment system with release lever for easy installation onto / removal from any of the 30 different positions on the LinQ 13.5 gal (51 L) Cooler or in front of some vehicle using the Cup and Rod holder front supports.
- Firmly holds fishing rod using a molded rubber cap specifically designed to quickly secure or remove the fishing rod using the reel arm.
- Perfect to safely transport your fishing rods to your favorite fishing spots or for trolling.
- Can be installed on the 13.5 US gal (51 L) cooler or on the Cup and Rod holder front supports.

295100795

\$30.99



LinQ 4.2 US gal (16 L) Cooler

- LinQ mounted weather-resistant cooler.
- Rotomolded construction for exceptional rigidity and durability.
- Premium-quality foam insulation for optimal ice retention.
- Already marinated for saltwater purposes.
- Note: Cannot be mounted on the LinQ Fuel Caddy.
- Note: LinQ Base Installation Kit is required to install LinQ accessories when not standard on the watercraft.

Models with LinQ Base Kit

295100698

\$379.99



LinQ Update Locking Anchor Base Kit For Large Cooler

(Not illustrated)

- LinQ bases with locking system for staying in the "up" position while installing LinQ accessories.
- Required on 2018 models and some 2019 models, to install the LinQ 13.5 gal (51 L) Cooler (269800943).
- Replaces standard LinQ bases.
- Standard on all vehicle with LinQ (from factory) 2020 and up.

**RXT, RXT-X, GTX, GTX Ltd and
WAKE PRO (2018 and some 2019)**

295100858

\$15.49

Outfit the moment, quickly and toollessly



LinQ Watertight Bag

- Fully waterproof roll-top design secures gear tightly.
 - 10.6 US gal (40 L) of adjustable capacity.
 - Heavy-duty rigid plastic base.
 - Foam-lined bottom for additional protection.
 - Integrated handle for easy transportation on/off the vehicle.
 - Equipped with Marinized LinQ Hardware Kit.
 - 2 LinQ base included for installation on top of the LinQ Fuel Caddy.
- Note: LinQ Base Installation Kit is required to install LinQ accessories when not standard on the watercraft.

Models with LinQ Base Kit
715002875
\$234.99



LinQ Box

- High-precision injected HDPE construction provides rigidity and durability.
- 5 US gal (19 L) maximum capacity.
- Weather-resistant, sealed and lockable cover.
- Equipped with Marinized LinQ Hardware Kit.
- Note: LinQ Base Installation Kit is required to install LinQ accessories when not standard on the watercraft.

Models with LinQ Base Kit
715004301
\$179.99



LinQ Fuel Caddy

- Designed for easy pouring.
 - 3.8 US gal (14.5 L) capacity.
 - Allows the LinQ watertight bag (715002875) to stack on top for more storage.
 - Already marinized for saltwater purposes.
 - LinQ Base Installation Kit is required to install LinQ accessories when not standard on the watercraft.
- Note: Fuel caddies cannot be stacked.

Models with LinQ Base Kit
295100752
\$234.99



Marinized LinQ Hardware Kit

- Essential upgrade for LinQ Bags when used on watercraft in saltwater.
- Includes stainless steel LinQ hardware to render your LinQ fully corrosion proof.
- Quick and easy installation.
- Not required for installation of the LinQ Coolers, LinQ Watertight Bag and LinQ Box.

295100751
\$23.99



Note: LinQ Base Installation Kit is required to install LinQ accessories when not standard on the watercraft.



Bags and Storage

Removable Storage Bin Organizer

- Breathable front bin organizer made from high-quality premium-coated synthetic mesh.
- Carrying handle and easy storage on or off the watercraft.
- Perfect for storing wet clothes away from the rest of your gear or to transport gear to/from the watercraft.
- Quick-attach fasteners to secure the bag in place inside the storage bin.
- Designed to be installed with the Storage Bin Organizer (295100835) for a complete set-up (295100732 only).

RXT, RXT-X, GTX, WAKE PRO (2018 and up) / FISH PRO (2019 and up)

295100732
\$77.99

GTI, GTI SE, GTR and WAKE 170 (2020 and up) / RXP-X (2021)

295100814
\$77.99



295100732

NEW

Lid Organizer

- Practically positioned in an easily accessible location in front compartment.
- Keep your small items dry in splash-proof inner pocket.
- External mesh pocket allows you to store more items while keeping them in view.
- 1.6 US gal (6 L) volume.

GTI, GTI SE, GTR and WAKE 170 (2020 and up) / RXP-X (2021)

295100862
\$74.99



Storage Bin Organizer

- Leave-in breathable premium-coated synthetic mesh organizer.
- Perfect for safely storing and organizing smaller valuables.
- Designed to be installed in conjunction with the Removable Storage Bin Organizer for a complete setup (295100732).
- Standard on GTX Ltd models (2018 and up).

RXT, RXT-X, GTX, WAKE PRO (2018 and up) / FISH PRO (2019 and up)

295100835
\$41.99

Front Storage Bin Kit

- Soft-sided design matches the contours of the SPARK to maximize storage.
- 7.4 US gal (28 L) capacity.
- Polyurethane construction protects items from rough waves.
- Drain holes at bottom.
- BRP Audio-Portable System compatible.
- Front Deflector Lid Kit is included.

SPARK

295100864
\$209.99



Dry Bag - 25 L

- Watertight bag.
- Puncture-resistant PVC coated polyester fiber material.
- Reinforced bottom.
- Includes a shoulder strap.
- 420-denier resistant polyester with TPU coating.

269001936 • 6.6 US gal (25 L)
\$67.99



Dry Bag - 10 L

- Watertight bag.
- Puncture-resistant PVC coated polyester fiber material.
- Reinforced bottom.

269502121
\$39.99



LinQ Fuel Caddy Replacement Rubber Cap

(Not illustrated)

295100791
\$37.99

LinQ Fuel Caddy Replacement Cap and Nozzle

(Not illustrated)

860202130
\$14.99

Front Deflector Lid Kit

- Made of polypropylene, this removable deflector directs water away from the driver's feet and legs for a drier ride.
- BRP Audio-Portable System compatible.

SPARK

295100865
\$129.99



Front Storage Tray

- Optimizes storage space.
- 3.2 US gal (12 L) capacity.

RXP-X (2012-2020) / GTI and GTS (2011-2019) / GTR (2012-2019) / WAKE 155 (2011-2019)

295100583
\$204.99



Watersport Accessories

Getting towed has never been so exciting



Tow Pro

- Three accessories in one – a tow pylon, spotter handle and equipment rack.
 - Add more fun to pulling wakeboarders, wakeskaters and tubers thanks to higher tow point.
 - Gives the spotter more confidence with ergonomic grab handles.
 - Carry your board out to clear water.
 - Includes a strap for conveniently stowing your tow rope.
 - Not compatible with SPARK 3 up LinQ Base Installation Kit (296100802).
- Note: Never use the Ski Pylon to tow an inflatable or similar toy. Always use the rear cleat.

SPARK 3up
295100605
\$434.99



LinQ Retractable Ski Pylon

- High-rise pylon keeps rope out of water for better watersport fun.
 - Features built-in spotter grab handles and retracts out of the way when not in use.
- Note: Never use the Ski Pylon to tow an inflatable or similar toy. Always use the rear cleat.

RXT, RXT-X, GTX, GTX Ltd / GTI, GTI SE, GTR (2020 and up) / FISH PRO (2019 and up)
295100909
\$399.99

LinQ
SYSTEM™

The LinQ System offers quick and easy installation and removal.



Retractable Ski Pylon

- High-rise pylon keeps rope out of water for better watersport fun.
 - Features built-in spotter grab handles and retracts out of the way when not in use.
 - Standard on WAKE 155 models (2019 and prior).
- Note: Never use the Ski Pylon to tow an inflatable tube or similar toy. Always use the rear cleat.

RXT-X, GTX, RXT (2017 and prior, except models with iS) / GTI and GTS (2011-2019) / GTR (2012-2019) except GTR-X / GTX Ltd (2014-2017)
295100457*
\$464.99



Strap Replacement Kit

295100740
\$26.99



*Note: While supplies last.



Step and Ladder

Wakeboard Rack

- Each rack holds one wakeboard while offering safe and easy board storage.
- Convenient to use and easily removable.
- Sold individually.
- Standard on WAKE and WAKE PRO models.

RXT, RXT-X, GTX, GTX Ltd, WAKE PRO (2018 and up) / GTI, GTI SE, GTR, WAKE (2020 and up) / FISH PRO (2019 and up)

295100838
\$219.99



Part numbers you will also need for installation:

GTI and GTS (2011-2019)
291003104, 291002864
RXT and GTX (2010-2017)
291003582, 291002864

Shock Tube

- Protects passengers from ski rope kick-back and keeps it away from impellers.
- Durable nylon covered closed-cell foam.

295100662
\$27.99



Ski Tow Eye

- Replaces existing U-ring for easy towing of skiers and tubes.

GTI, GTS, GTI, RXT and GTR
291002351
\$46.99



Boarding Step

- Convenient step with knee-friendly surface.
- Installs easily on the right side of a SPARK and can hold up to 250 lb (113 kg).
- Easily mounts on the transom and can be installed by any authorized Sea-Doo dealer in minutes.

SPARK
295100642
\$124.99



Boarding Ladder

- Retractable boarding step designed for your watercraft.
- Makes boarding from the water much easier.
- Spring-loaded platform that stays in the "up" position.
- Direct bolt-on installation, thanks to integrated mounting points on the watercraft.

RXT, RXT-X, GTX and WAKE PRO (2018 and up) / GTI, GTI SE, GTR and WAKE 170 (2020 and up) / RXP-X (2021)
295100869
\$259.99

GTI, GTS, GTR (2006-2019) / RXP (2006 - 2020) / RXT-X and GTX (2006-2017)
295100742
\$259.99



Tech Accessories

Your music, anywhere

Listen to your music in, on, or off the water with our portable, removable, and fully submersible audio system.



BRP Audio-Portable System

- 50-watt audio system with Bluetooth[®] connectivity.
- Fully submersible and removable, can be used on and off the watercraft.
- Front mounted and positioned toward driver for maximum sound clarity.
- Control pad on the speaker for volume and song adjustment.
- Powered with a rechargeable lithium battery that offers 24 hours* of autonomy.
- Support base with quick-attach system is required (295100913).
- Needed if installed in front of the SPARK:
- Front Deflector Replacement Lid (295100870) is required when installing the sound system on 2018 and prior models with iBR and Convenience Package or when the Front Storage Bin Kit (295100864) or the Front Deflector Lid Kit (295100865) is installed.
- Adjustable Riser Retrofit Kit (295100702) is required to install on SPARK (2016 and prior).

SPARK
295100866
\$839.99



Front Deflector Replacement Lid

- Required when installing the BRP Audio-Portable System (295100866) on SPARK with iBR and Convenience Package (2018 and prior)
 - Also needed when the Front Storage Bin Kit (295100504) or the Front Deflector Lid Kit (295100553) is installed on the watercraft.
 - Included on 2019 and up models equipped with the same feature.
- Note: To install the audio system in front of the SPARK only.

SPARK
295100870
\$46.99

BRP Audio-Portable System Support Base

- Required to install the BRP Audio-Portable System (295100866).

SPARK
295100913
\$64.99

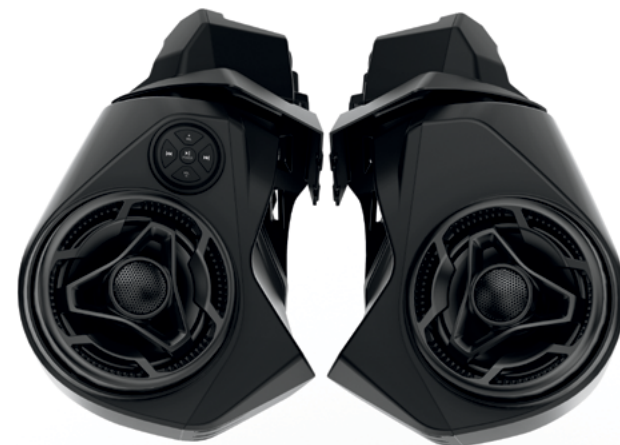


BRP Audio-Premium System

- Fully integrated Audio System with Bluetooth connectivity.
- Fully submersible.
- Two powerful 50-watt speakers for music clarity, even while riding.
- Remote control pad on left speaker to quickly and easily change songs and volume.
- Music will play even after engine is turned off.
- Need harness (278003684) if installed with the Garmin ECHOMAP Plus 62cv Fish Finder or heated grips.

**RXT, RXT-X, GTX,
WAKE PRO (2018 and up) /
FISH PRO (2019 and up)**
295100711
\$1,259.99

**GTI, GTI SE, GTR and
WAKE 170 (2020 and up) /
RXP-X (2021)**
295100839
\$1,259.99



295100711

*Based on BRP internal testing at approximately 50% volume. Battery life may vary depending on operating conditions, including but not limited to temperature.



Graphic Kits

Add a Splash of Color.

Enjoy a wide range of combinations with any of our 40+ different graphic kits, available in 3 customization levels across 8 color themes.

Customisation Levels

These Sea-Doo exclusive Attitude Graphic Kits let you customize your SPARK, whether for a simple facelift or because you want your watercraft to turn heads.

Light



Med



Full



New Graphic Kits

RXP-X
Hex



RXP-X
Riptide



RXT
Coral



GTX
Kinetic



GTI
Wakeset



GTI
SurfTrek



SPARK
Sundown



SPARK TRIXX
Hurricane



Customize your wrap coloration, design and even add registration numbers. For more details, see scsunlimited.com

Body Accessories

Make
extended
rides more
comfortable
than ever



Ergolock Knee Pads

- Allow you to rest your knees on a comfortable pad.
- Help keep your legs locked in place on the Ergolock System.
- To be combined with the Floorboard Wedges for improved balance on the vehicle.

RXT, RXT-X, GTX and
WAKE PRO (2018 and up) /
FISH PRO (2019 and up)
295100744 · Silver
295100804 · Black
\$169.99

SPARK
295100810 · Black
\$169.99



295100810

Angled Gunwale Footrests

- 4' long angled footrests with integrated mats, fixed on the upper outside edge of the footwell on each side of the watercraft.
- Provide a comfortable and secure position for the feet and legs while fishing from the side of the watercraft.
- Protect the paint finish on the edge of the footwells from abrasion caused by fishing.
- Standard on FISH PRO models.

RXT, RXT-X, GTX and
WAKE PRO (2018 and up)
295100793
\$129.99



Floorboard Wedges

- Designed for high-performance riding, extended angled floorboard wedges will keep all riders and passengers firmly planted, comfortable and secure.
- When used in conjunction with our Ergolock Knee Pads, the wedges ensure everyone can enjoy the full capabilities of the watercraft.

RXT, GTX and WAKE PRO
(2018 and up) / FISH PRO
(2019 and up) Standard
on RXT-X (2018 and up)

295100745
\$159.99

SPARK
295100875
\$159.99

NEW
GTI, GTI SE, GTR,
WAKE 170 (2020 and up)
(stock on RXP-X 2021)
295100926
\$159.99



295100926



295100875

Side Protectors

- This 6-piece rubber formed protectors are specifically designed for the SPARK.
- Its curves and angles follow the lines of the watercraft to enhance the look while protecting it from small impacts and wear.
- Doesn't get in the way of Snap-in Fenders or any maintenance you need to perform.

SPARK
295100575
\$193.99





Body Accessories

NEW

Passenger Seat

- Only way to have a passenger on a stock RXP-X.
- Two grab options for passengers, side and middle.
- No tools required for installation – simply remove driver-adjustable rear cushion, unclip base, clip on passenger seat.

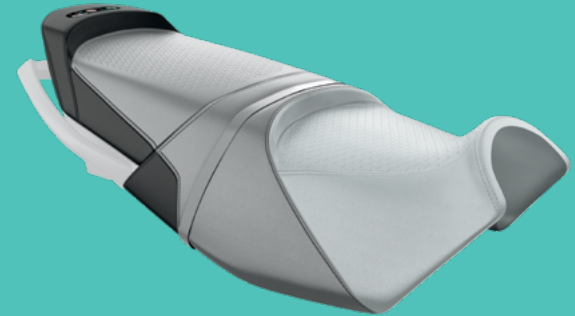
RXP-X (2021)
295100923 (Black)
\$489.99



Fishing Seat

- Designed for ease of movement from driver position to passenger for fishing.
- Optimized for fishing facing sideways with increased lateral stability when combined with the Angled Gunwale Footrests (295100793).
- Fits all watercraft colorations.

RXT, RXT-X, GTX and WAKE PRO (2018 and up)
295100882
\$864.99



Mirrors

- Durable and rugged construction for withstanding rough riding conditions.
- Perfectly integrated to the vehicle.
- Convex lens for wide angle view.
- Sold in pairs.

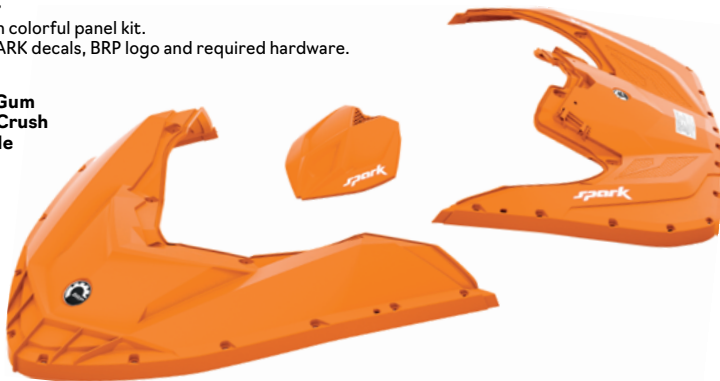
SPARK
295100881
\$159.99



SPARK Panel Kit*

- Pump up your SPARK with colorful panel kit.
- Kit includes: 3 panels, SPARK decals, BRP logo and required hardware.

SPARK
● 295100613 - Bubble Gum
● 295100615 - Orange Crush
● 295100617 - Pineapple
\$529.99



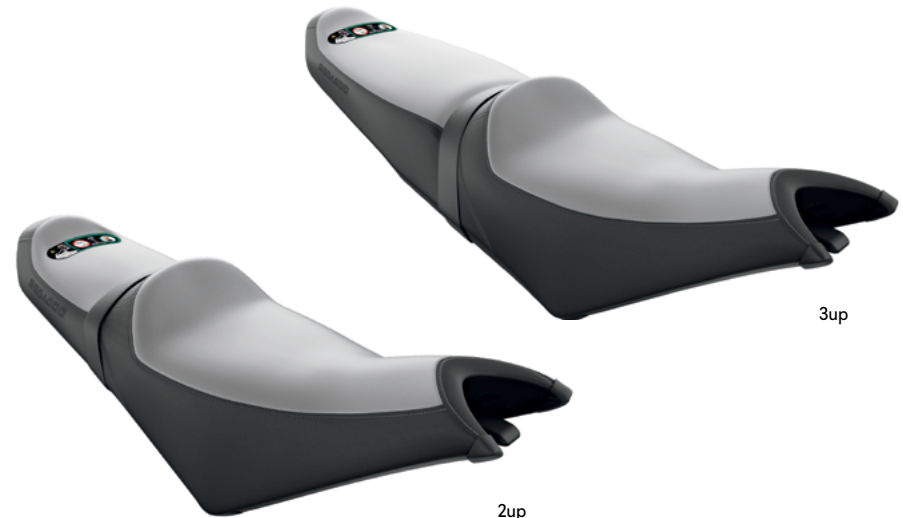
*Limited quantities available.

Comfort Seat

- Seat specially designed to increase riding comfort on extended rides.
- Features a formed and larger sitting surface for better weight spread and stability in rough water.
- Constructed with soft foam.
- Direct replacement of the standard seat.

SPARK 2up
295100893
\$299.99

SPARK 3up
295100894
\$359.99



3up

2up

Riding Essentials



LinQ™ Fuel Caddy

- Designed for easy pouring.
 - 3.8 US gal (14.5 L) capacity.
 - Allows the LinQ watertight bag (715002875) to stack on top for more storage.
 - Already marinated for saltwater purposes.
 - LinQ Base Installation Kit is required to install LinQ accessories when not standard on the watercraft.
- Note: Fuel caddies cannot be stacked.

Models with LinQ Base Kit

295100752
\$234.99



LinQ Fuel Caddy Replacement Rubber Cap

(Not illustrated)
295100791
\$37.99

LinQ Fuel Caddy Replacement Cap and Nozzle

(Not illustrated)
860202130
\$14.99

Fire Extinguisher

- A requirement for any watercraft.
- Designed to fit in any fire extinguisher case holder.
- Ideal for grease, oil and electrical fires.
- US and Canadian Coast Guard approved.

295100833 (White)
\$38.99



Whistle

- "Pea-less" whistle.
- Produces an extremely loud, high, penetrating sound that can be heard over long distances.
- Unaffected by water; just clear with one quick blow.

295500554
\$15.49



Blank Sheet for Stickers

- (Not illustrated)
- Apply this self-adhesive sheet on your vehicle so you can add your own regional or other personalized stickers.

295100654 (White)
\$26.99

Safety Equipment Kit

- This kit includes all the essentials for your watercraft.
- 50' (15 m) of buoyant heaving line, bailer, whistle and watertight flashlight.

295100330
\$25.99



Registration Kit

- (Not illustrated)
- High-quality UV-resistant registration kit.
 - Easy to install without deformation, with a glue that will adhere to all surfaces, including SPARK.
 - Available in two contrasting colors that meet mandatory regulations for height and size.

All watercraft

3" (7.6 cm)
295100570 · Black
295100578 · Light Grey
\$39.99

4" (10.2 cm)
• Meets international laws.
295100631 · Black
\$46.99



Controls and Grips

Fun factor

All rise for the ride. The Sea-Doo adjustable handlebar riser lets riders customize handlebar height. Whether it's a comfort cruise or standing up to put on a show, every rider can find the perfect position.

Handlebar with Adjustable Riser

- The one-of-a-kind handlebar with adjustable riser gives you more leverage to easily maneuver the SPARK and customize your experience to your personal riding style.
- Quickly adjust steering to a variety of heights – use the lower position for cruising/sitdown riding, or extend to maximum height in seconds for stand-up riding.
- Adjustable length of 1.6" to 4" (42.5 mm to 103.5 mm).
- Just flip the lever to make the adjustment, no tool required.

SPARK
295100746
\$314.99



Part numbers you will also need for installation:

SPARK without iBR*
2016 and prior: 278003491, 295100702
2017 and up: 278003491

SPARK with iBR
2016 and prior: 278003490, 295100702
2017: 278003490 2018 and up: 278003823

*Intelligent Brake and Reverse (iBR)™.

NEW

Adjustable Riser

- Replaces stock fixed extrusion to allow vertical adjustment length of +5/8" to 3 3/8" (+16mm to 92 mm) from stock.
- Ergonomically better in stand-up riding position.
- Includes all hardware required for installation.

RXP-X (2021)
295100922
\$219.99



Adjustable Riser Retrofit Kit

- Replaces stock central console to allow for installation of Handlebar with Adjustable Riser.
- Handgrips with Palm Rest included.
- Reinforced design, includes all hardware required for installation.

SPARK (2016 and prior)
295100702
\$129.99



Step Wedges

- Provide more stability and confidence in different tail-stand riding positions.
- Rear footrest with a 45-degree slope to enable you to stand upright on your watercraft when performing tail stands and ultimately expand your range of possibilities by making it easier to pull off even more tricks.

SPARK
295100705
\$119.99



Extended Range Variable Trim System (VTS)

(Not illustrated)

- This Sea-Doo exclusive accessory lets you exaggerate how high you can raise the nose or how deep you can bury it in the water.
- The extended range VTS doubles the range of adjustment compared to our current standard VTS.
- Adjustments are instantaneous thanks to the quick activation switch mounted on the handlebar to allow fine tuning of the watercraft trim angle while riding.

- Simple plug-in connection, and includes switch, cap and hardware necessary for installation.
- Standard on SPARK TRIXX.

SPARK with iBR
(2017 and up – full extended range),
(2016 and prior – stock range)
295100704
\$259.99

Wiring Harness

(Not illustrated)

- Required in order to install the Handlebar with Adjustable Riser (295100746) and/or RF D.E.S.S. Key (295100945).
- Works for either accessory or when using both at the same time, so no need to buy a second harness.

SPARK with iBR (2017 and prior)	SPARK with iBR (2018 and up)	SPARK without iBR
278003490	278003823	278003491
\$92.99	\$92.99	\$92.99

Controls and Grips



Heated Grips

- Heated grips with integrated button on the left grip.
- 5 levels of heat.
- Slip on to replace existing grips.
- Integrate Sea-Doo's renowned palm rest design.
- Use with Wind Deflectors for handlebar (295100762) for maximum performance.
- Harness 278003684 is needed if installed with audio system or with the Garmin Echomap Plus 62cv Fish Finder.

RXT, RXT-X, GTX, GTX Ltd, WAKE PRO (2018 and up) / RXP-X (2021) / GTI, GTI SE, GTR, WAKE (2020 and up) / FISH PRO (2019 and up) / SPARK

Heated grip harness required to install on other vehicles
295100812
\$254.99



Heated Grips Harness

(Not illustrated)
295100906
\$56.99

Needed for installation on some vehicles:

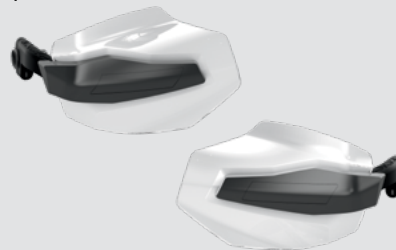
GTX, RXT, WAKE PRO (2011-2017) / GTI, GTS, GTR, WAKE (2011-2019) / GTR-X (2018-2019) / RXP-X (2018-2020) / SPARK

Wind Deflectors for Handlebar

- Design delivers better protection and great style.
- Protection from cold wind and water splashes.
- Sold in pairs.

GTX, RXT, RXT-X, and WAKE PRO (2010 and up) / GTI, GTS and WAKE (2011 and up) / GTR and RXP-X (2012 and up) / SPARK (2014 and up)

295100762
\$134.99



Handgrips Kit

- Better control and comfort using dual density rubber design.
- Sold in pairs.

Fits all watercraft (2000 and up) except SPARK (2015 and prior)

- 295500976 · Blue/Black
- 295500977 · Earth Grey/Black
- 295500979 · Red/Black
- 295500981 · Yellow/Black

\$22.99

- 295500980 · Pewter Grey/Black

\$21.99

- Sold individually
- 277001336 · Slate Grey/Black

\$20.99



Handlebar

- 7/8" (22 mm) colored stainless steel handlebar.

GTR-X (2016-2019) / RXP-X (2016 and up) / SPARK with Adjustable Riser

- 277002069 · Neon Yellow
- 277002173 · Dragon Red
- 277002172 · White
- 277002123 · Jungle Green

\$117.99

NEW ● 277002139 · Millennium Yellow

NEW ● 277002161 · Manta Green

\$122.99



Handgrip with Palm Rest

- Designed and profiled to deliver a much firmer grip with less effort, allowing you greater control and comfort on longer rides, minus the hand fatigue.
- Sold individually.

GTX, RXT, RXT-X and WAKE PRO (2010 and up) / GTI, GTS and WAKE (2011 and up) / GTR (2012 and up) / RXP-X (2012 and up) / SPARK (2014 and up)

Right

- 277001946 · Black

\$20.99

- 277002014 · Red

\$18.99

Left

- 277001958 · Black

\$20.99

- 277002015 · Red

\$18.99





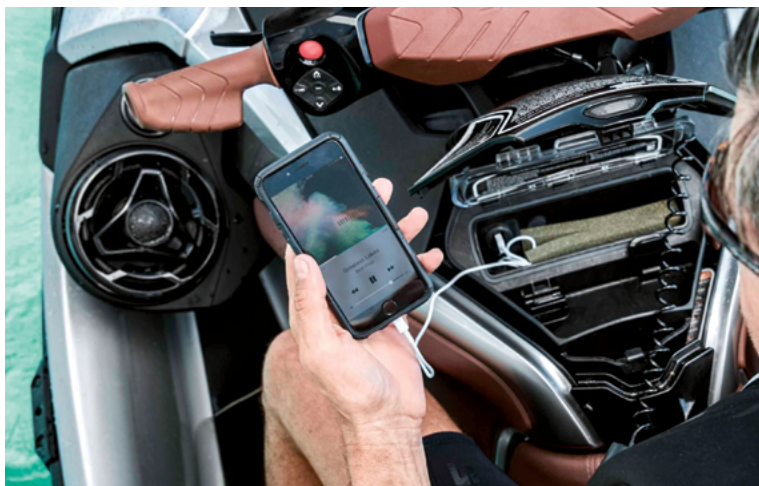
Provides preset positions for quick settings when adjusting the watercraft trim. When you trim up, you'll have a drier ride, which helps when towing. When you trim down, you can ride more aggressively while staying glued to the water.

Electronics and Electricals

Extended Range Variable Trim System (VTS)

- This Sea-Doo exclusive accessory lets you exaggerate how high you can raise the nose or how deep you can bury it in the water.
- The extended range VTS doubles the range of adjustment compared to our current standard VTS.
- Adjustments are instantaneous thanks to the quick activation switch mounted on the handlebar to allow fine tuning of the watercraft trim angle while riding.
- Simple plug-in connection, and includes switch, cap and hardware necessary for installation.
- Standard on SPARK TRIXX.

SPARK with iBR (2017 and up – full extended range), (2016 and prior – stock range)
295100704
\$259.99



USB Port

- Allows to charge your devices like phone and action camera.
- USB charger equipped with a smart module that detects the amperage your phone needs so you always enjoy consistent charge time and never have to worry about frying your device.

RXT, RXT-X, GTX, WAKE PRO (2018 and up) / RXP-X (2021) / GTI, GTI SE, GTR, WAKE (2020 and up) / FISH PRO (2019 and up)
295100710
\$144.99

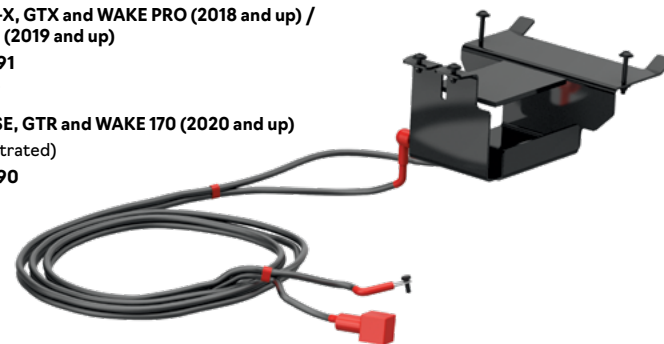


Secondary Battery Harness Kit

- Allows you to add a second unit to your dual battery setup.
- Will give you the extra juice you'll need to power electrical components like the BRP Audio-Premium System or Garmin Echomap Plus 62 cv Fish Finder for longer periods.
- Kit includes necessary wiring and battery holder.
- Additional battery sold separately (410301203).

RXT, RXT-X, GTX and WAKE PRO (2018 and up) / FISH PRO (2019 and up)
295100991
\$299.99

GTI, GTI SE, GTR and WAKE 170 (2020 and up)
 • (Not illustrated)
295100990
\$119.99



Garmin[†] ECHOMAP[†] Plus 62cv GPS*

- Allows riders to enjoy top-of-the-line navigation charts as well as fish finding technology.
- Bright, sunlight-readable 6" (15.2 cm) monitor.
- Includes world basic maps.
- Use built-in Wi-Fi to pair with the free ActiveCaptain[†] app for access to OneChart[†], smart notifications, Garmin Quickdraw[†] Community data and more.
- Share waypoints and routes with other ECHOMAP or STRIKER[†] units.
- Need harness (278003684) if installed with the BRP Audio-Premium System or with heated grips.
- Standard on FISH PRO models.

Fish Finder with Garmin CHIRP[†] traditional sonnar.

RXT, RXT-X, GTX, WAKE PRO (2019 and up*) / GTI, GTI SE, GTR and WAKE 170 (2020 and up) / RXP-X (2021)
295100921
\$1,129.99

Transducer not included. Provides GPS functions only.

RXT, RXT-X, GTX, WAKE PRO (2019 and up*) / GTI, GTI SE, GTR and WAKE 170 (2020 and up) / RXP-X (2021)
295100871
\$759.99

* For 2018 models, see your certified BRP dealer to validate compatibility.

Electronics and Electricals



RF D.E.S.S.™ Key

- Anti-theft technology for the marine world.
- Digitally Encoded Security System (D.E.S.S.) key's ball-and-socket design provides riders with easy and quick starts every time.
- A radio frequency chip inside the key communicates with the vehicle wirelessly, so your SPARK starts only when the key code matches the vehicle, for ultimate peace of mind.
- Unlike previous D.E.S.S. keys, harness now sold separately.

SPARK
295100945
\$134.99



Part numbers you will also need for installation:

SPARK without iBR*: 278003491
SPARK with iBR
2017 and prior: 278003490
2018 and up: 278003823
SPARK Trixx
2017 and prior: 278003490, 278003195
2018 and up: 278003823, 278003195
*Intelligent Brake and Reverse (iBR)™.

Learning Key Lanyard

- Reduces the speed of your watercraft and allows less experienced riders to learn gradually.

All vehicles with D.E.S.S key (2015 and up)
278003401 (Green)
\$79.99

DI and 4-TEC models (2014 and prior)
278002203
\$72.99



278003401



278002203

D.E.S.S.™ Floating Safety Lanyard

- Replacement D.E.S.S. lanyard.

All vehicles with D.E.S.S. key (2015 and up)
278003400 (Yellow) Standard
278003402 (Black) GTX Ltd
278003403 (Orange) Rental
\$79.99

All models (2014 and prior)
278002199
\$69.99



Ski Module

(Not illustrated)

- Activates ski mode.
- Offers a choice of different preset acceleration curves for perfect launch every time when towing a skier or wakeboarder, plus steady tow speed.
- User-friendly interface on gauge.
- Simple plug-in connection.
- Includes hardware necessary for installation.
- Note: Harness (278002569) and 3 amps. fuse (710001008) are required to install on 2011 to 2017 models.

GTI, GTI SE, GTR (2020 and up)
295100756
\$179.99

Ski and X Package Module

(Not illustrated)

- One module that includes both Ski and X Package functions:
 - Activates ski mode: Offers a choice of different preset acceleration curves for perfect launch every time when towing a skier or wakeboarder, plus steady tow speed.
 - Activates X package functions on gauge. See X package module description to find out what are the X features that it unlocks on your vehicle.
- User-friendly interface on gauge.
- Simple plug-in connection.
- Includes hardware necessary for installation.

RXT, RXT-X, GTX, GTX Ltd, WAKE PRO (2018 and up) / GTI, GTI SE, GTR, WAKE (2020 and up) / FISH PRO (2019 and up)
295100857
\$199.99

X Package Module

(Not illustrated)

- User-friendly interface on gauge.
 - Simple plug-in connection.
 - Includes hardware necessary for installation.
- Note: Harness (278002569) and 3 amps. fuse (710001008) are required to install on 2011 to 2017 models
For GTX, RXT and WAKE PRO (2018 and up), GTI, GTS, GTR and WAKE 155 (2020 and up) the features are:
Average and top speed/RPM display unlocks launch mode control and the complete VTS range (50% more range)

For GTI, GTS, GTR and WAKE 155 (2017-2019) the features are:
Lap timer, fuel time and distance to "empty," average and top speed/RPM display and engine temperatures.

RXT, GTX, GTX Ltd, WAKE PRO (2018 and up) / GTI, GTI SE, GTR, WAKE (2020 and up) / FISH PRO (2019 and up)
295100757
\$179.99

Battery Charger/Maintainer

- Fully automatic 3 Amp battery charger/maintainer.
- Keeps stored lead-acid batteries charged.
- Charges and maintains small batteries.
- Microprocessor controlled multi-stage charging for added precision, safety and battery life.
- Auto-voltage detection.
- Automatically detects 6 or 12 Volt batteries.
- Float mode monitoring automatically maintains optimum battery charge.
- Reverse hook-up protection helps protect battery and charger from damage.
- Hook attachment hangs outside the work area for safety and convenience.
- Display/on button.
- Press the display button to show the charge progress.
- Meets the highest industry standards for energy efficiency/eco friendliness.
- Content: 3 Amp battery charger, clamp adapter, DC adapter, 24" fused ring leads harness with weather cap, owner's manual.

715005061
\$71.99



12-Volt Outlet and Installation Kit

- Use this 12V outlet to charge your phone or GPS unit.
 - Equipped with waterproof cover to prevent water infiltration.
- GTX and RXT without suspension (2015 and prior) / WAKE PRO (2015 and prior)**
295100612
\$69.99

GTX and RXT without suspension and WAKE PRO (2016-2017)
295100675
\$51.99

All models
295100577
\$72.99



Electric Connection Kit

(Not illustrated)

- A very convenient and safe way to add electrical accessories.
- Plug-and-play connection.
- Required in order to install the Depth Finder on specific models (Refer to the Depth Finders table).

Models on Polytec Hull

295100599

\$124.99

Electronics and Electricals

Depth Finders

- Display the water depth below the hull.
- Plug-and-play connection.
- Standard on GTX Ltd models.

Model	Year	295100324	295100332	295100679	295100927	295100872
Prices		\$444.99	\$444.99	\$459.99	\$459.99	\$459.99
SPARK	2014 and up*			●		
GTI/GTS	2008-2010	●				
GTI/GTS (900 HO) (Polytec™ hull)	2017-2019			●		
GTI/GTR/GTR-X (Fiberglass hull)	2011-2017			●		
	2018-2019				●	
GTI (Polytec hull)	2019**				●	
WAKE	2011-2017			●		
	2018-2019**				●	
GTI/GTI SE/GTR/WAKE 170	2020 and up					●
GTX	4-TEC engine (2009 and prior, except 2002)	●				
	2010		●			
	2011-2017			●		
	2018 and up				●	
GTX iS/aS	2010 and prior		●			
	2011-2017			●		
GTX Ltd	2011-2017			●		
	2018 and up				●	
RXT/RXT-X	4-TEC engine (2009 and prior, except 2002)	●				
	2010		●			
	2011-2017			●		
	2018 and up				●	
RXT iS/RXT-X aS	2011-2016			●		
RXP/RXP-X	2012-2017			●		
	2018 and up				●	
RXP-X	2021					●
WAKE PRO	2010 and prior		●			
	2011-2017			●		
	2018 and up				●	

* For 2014 models, see your certified BRP dealer to match the right kit to your watercraft.

** Electric Connection Kit (295100599) required for installation.

Bilge Pump Kits

- Keeps engine compartment dry.
- Includes bilge pump, mounting bracket, bilge fitting, hose and hardware necessary for installation.

Model	Year	295100497	295100634	295100678	295100681	295100739
Prices		\$194.99	\$189.99	\$194.99	\$194.99	\$194.99
SPARK	2014 and up	●				
GTI/GTI SE/ GTS/GTR (Fiberglass hull)	2011-2019				●	
GTI/GTS (Polytec hull)	2011-2019	●				
WAKE	2011-2017*				●	
	2018-2019	●				
GTI/ GTI SE /GTR/ WAKE	2020 and up					●
FISH PRO	2019 and up					●
GTX	2010-2015**				●	
	2015**		●			
	2016-2017			●		
GTX/GTX Ltd	2018 and up					●
RXT/RXT-X	2010-2015**				●	
	2015**		●			
	2016-2017			●		
	2018 and up					●
RXP-X	2012-2015**				●	
	2015** -2020			●		
	2021					●
WAKE PRO	2010-2015**				●	
	2015**	●				
	2016-2017			●		
	2018 and up					●

For 2014* and 2015** models, see your certified BRP dealer to match the right kit to your watercraft.

Docking

Quick and secure

Safeguard your ride in between rides with Sea-Doo Snap-in Fenders and Speed Ties.



NEW

Speed Tie

- Easy to use, integrated rope management system.
- Positive locking for worry-free docking.

• ¼ inch (6 mm) double braided rope, 5.2 feet (1.6 m) at front and 8.5 feet (2.6 m) at rear.

GTX, RXT, RXT-X, WAKE PRO (2018 and up)
295100885
\$239.99



• ¼ inch (6.35 mm) double braided rope, 11.5 feet (5.5 m) at front.

FISH PRO
295100924
\$199.99



Speed Tie for Dock

- (Not illustrated)
- Same exclusive mooring system available as a watercraft accessory, adapted for dock mounting.
 - Provides quick and secure mooring for all watercraft, eliminating excessive rope on deck.
 - Bolts directly to dock.
 - Stores 5 ½' (1.7 m) of rope and locks to desired length.
 - Sold individually.
- 295100336**
\$159.99

Speed Tie

- Fully-integrated watercraft mooring system, providing the ultimate in convenient, quick and secure docking.
- A must-have accessory that frees up storage space and ensures you have a dock line at all times.
- Stores 5 ½' (1.7 m) of rope and locks to desired length.
- Standard equipment on the GTX Ltd models (2017 and prior).
- Sold in pairs.

SPARK
295100496
\$264.99

RXP-X (2012-2017) / GTR-X (2017) / RXT-X (2015)
295100466
\$289.99

GTR (2012-2019) / GTI, GTI SE and GTS (2011-2019) / GTX without suspension (2010-2017) / WAKE PRO (2017 and prior) / RXT and RXT-X without suspension (2010-2017) / WAKE 155 (2010-2019)
295100680
\$309.99

Snap-in Fenders

- Protect your investment from dock damage with these easy to install and remove fenders designed specifically for Sea-Doo watercraft.
- Front and rear on the SPARK models ensure a solid mount in the optimal spot.
- The Snap-in Fenders float and the high-visibility orange color keeps them in sight.
- Requires Snap-in Fenders Installation Kit (295100550, 295100729 or 295100944) to install on models other than SPARK.
- Patent pending.
- Sold in pairs.

Fit on all watercraft
295100418
\$124.99



Snap-in Fenders Installation Kit

- Lets you enjoy the fastest, easiest way to install protective fenders on your watercraft.
- Not required for SPARK models.

RXP-X (2012-2020) / GTI, GTR and GTS (2011-2019) / GTX, RXT, RXT-X and WAKE PRO (2008-2017)
295100550
\$27.99



RXT, RXT-X, GTX and WAKE PRO (2018 and up) / FISH PRO (2019 and up)
295100729
\$30.99

NEW GTI, GTR and WAKE 170 (2020 and up) / RXP-X (2021)
295100944
\$30.99





Folding Anchor

- 3.5 lb (1.6 kg) grapnel folding anchor with protective coating.
- Perfect for temporary mooring of watercraft and small boats in mud, sand, gravel, and rock.
- Includes a 25' (7.62 m) marine-grade rope with an in-line buoy, heavy-duty stainless steel snap hook, and a nylon storage case.
- Compact enough for the storage compartment.

295100750
\$61.99



Anchor

- 11 lb (5 kg) fluke-style anchor with slip ring provides sure grip.

295100046
\$77.99



Sandbag Anchor

- Made of 600-denier solution-dyed yellow polyester fabric capable of holding an estimated 45 lb (20 kg) of wet sand.
- Measures 15 3/4" x 9" (40 cm x 22.9 cm).
- 16' half-inch nylon strap (4.9 m x 1.3 cm).
- Plastic hook attachment and molded floater.

295100661
\$39.99



Manual Reverse Kit

- This kit can be easily added to your SPARK and will help immensely in docking maneuvers and trailer loading.
- A lever located on the left side makes it easy to engage reverse and avoid the need for aggressive or dangerous maneuvers.

SPARK without iBR
295100596
\$384.99



Dock Tie

- Moor your watercraft with this floating Sea-Doo shock cushioned nylon rope.
- Provides security to keep your watercraft and dock attached.
- One per package.

295100851
\$39.99



Fender

- Polyform strength and dependability with a vinyl valve system for quick, flexible adjustment of firmness.
- One 16" fender and one rope per package.

295100877
\$47.99



Covers

Choose the cover perfectly suited to your watercraft

A cover protects your Sea-Doo watercraft from the elements and helps preserve its finish.



295100928



295100889



295100908

SEA-DOO COVERS Key Features

- ✓ Weather-resistant trailering cover protects your watercraft during storage and transportation.
- ✓ Made of heavy-duty UV-resistant solution-dyed polyester canvas.
- ✓ Soft inner lining prevents panel abrasion.
- ✓ Areas prone to higher wear are reinforced with a layer of double canvas.
- ✓ A perfect fit for your watercraft, with or without installed Sea-Doo accessories.
- ✓ Standard on GTX LTD models.

- 1 Yellow fabric indicates handle insertion points.
- 2 Zippered openings allow easy access to mooring cleats.
- 3 Zippered opening permits easy access to the glove box 3.1, front storage 3.2 and for refueling 3.3.
- 4 Zippered opening accommodates LinQ accessories on the rear deck with the cover in place.
- 5 Patented air release vent system for trailering.
- 6 Side hooks secure the cover while trailering.
- 7 Zippered opening allows the use of tie-downs for securing covered watercraft on the trailer.
- 8 Speed tie ready.
- 9 FISH finder and GPS ready.



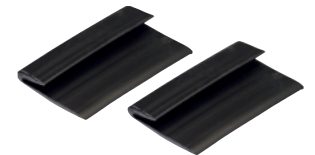
Features may vary depending on watercraft model cover.

Cover Replacement Hooks

All models (2017 and up)
295100754
\$5.19



All models (2016 and prior)
295100407
\$5.19



Covers



295100873



295100724



280000460, 295100718, 295100719



295100722



295100720



295100912, 295100789

Fits		1	2	3.1	3.2	3.3	4	5	6	7	8	9	Colors	Skus	Price
GTX, RXT models with suspension	GTX S, GTX Limited S (2012-2017)	●	●					●	●	●	●		Black/ Light Grey	295100718	\$319.99
	RXT iS, GTX iS, GTX Limited iS (2009-2016)	●	●					●	●	●	●			280000460	\$319.99
	RXT-X aS (2011-2016)	●	●					●	●	●	●			280000586	\$319.99
GTX, RXT, WAKE PRO, FISH PRO models without suspension	RXT, RXT-X, GTX, WAKE PRO (2018 and up)	●	●	●	●	●	●	●	●	●	●	●	Black	295100908	\$329.99
	GTX S, GTX Limited, RXT, RXT-X (2010-2017)		●					●	●	●	●	●	Black/ Light Grey	295100719	\$319.99
	WAKE PRO (2010-2017)	●	●					●	●	●	●	●	Black	295100720	\$319.99
	FISH PRO	●	●	●	●	●	●	●	●	●	●	●	Black	295100873	\$329.99
RXP-X, GTR-X models	RXP-X (2012-2020)	●	●					●	●	●	●		Black/ Light Grey	295100721	\$319.99
	GTR-X (2017-2019)	●	●					●	●	●	●			295100889	\$329.99
	NEW RXP-X (2021)	●	●		●	●	●	●	●	●	●	●			
GTS, GTI, GTR, WAKE models	GTS, GTS Rental, GTI, GTI SE, GTI Limited (2011-2019)	●	●					●	●	●	●	●	Black/ Light Grey	295100722	\$319.99
	GTR (2012-2019)	●	●					●	●	●	●	●		295100723	\$319.99
	WAKE (2011-2019)	●	●					●	●	●	●	●	Black	295100724	\$319.99
	NEW GTI, GTI SE, GTR and WAKE 170 (2020 and up)	●	●		●	●	●	●	●	●	●	●	Black	295100928	\$319.99
SPARK models	SPARK 2up	●	●	●		●	●	●	●	●	●	●	Black	295100912	\$279.99
	SPARK 3up	●	●	●		●	●	●	●	●	●	●		295100789	\$289.99

Note: For prior model years, ask your dealer for details.

MOVE Trailers

On the move

MOVE Trailers are designed to fit all Sea-Doo watercraft and make loading and unloading a snap.



MOVE TRAILERS Key Features

- ✓ Fully adjustable carpeted bunks (side-to-side/ front-to-back) allow you to change bunk angles to fit all watercraft.
- ✓ Custom frame design requires less water to load and unload watercraft.
- ✓ Sealed maintenance-free wheel bearings for added peace of mind.
- ✓ All models are available in galvanized frame for extended life in all weather conditions or in a painted black version with or without marine jack.
- ✓ MOVE I Extended 1250 and MOVE II are available in an aluminum frame.

Single Trailers

Aluminum MOVE I Extended 1250

- Aluminum alloy construction delivers better corrosion resistance to significantly extend life of trailer.
- Axle-mounted fenders make axle adjustments much simpler and faster.
- Waterproof LED lights more durable, energy-efficient and brighter than incandescent lighting.

With torsion suspension

Available with or without marine jack

Overall length	14' 3"	Coupler	2.0"
Overall width	5'	Approx. weight	250 lb
Width between fenders	4'	Carrying capacity	1,250 lb
Overall height (fenders)	22"	Tire size	4.80" x 12"
Overall height (winch)	33"		

Aluminum is a must for saltwater riders.



Aluminum

Note: Please contact your nearest Sea-Doo dealer for suggested retail prices of trailers.

Single Trailers

MOVE I 1250

With torsion suspension or with leaf spring suspension
Available with or without marine jack

Overall length	12' 5"	Coupler	2.0"
Overall width	4' 10"	Approx. weight	231 lb
Width between fenders	3' 9"	Carrying capacity	1,235 lb
Overall height (fenders)	24"	Tire size	4.80" x 12"
Overall height (winch)	31.5"		



Galvanized



Painted Black

The single trailer recommended to carry your SPARK.

MOVE I Extended 1250

With leaf spring suspension
Available with or without marine jack

Overall length	13' 4"	Coupler	2.0"
Overall width	5'	Approx. weight	250 lb
Width between fenders	4' 6"	Carrying capacity	1,250 lb
Overall height (fenders)	24"	Tire size	4.80" x 12"
Overall height (winch)	31.5"		



Galvanized



Painted Black

Ideal to carry any watercraft.

MOVE I Extended 1500

With leaf spring suspension
Available with or without marine jack

Overall length	13' 6"	Coupler	2.0"
Overall width	5' 3"	Approx. weight	276 lb
Width between fenders	3' 9"	Carrying capacity	1,499 lb
Overall height (fenders)	24"	Tire size	5.30" x 12"
Overall height (winch)	31.5"		



Galvanized



Painted Black

Single trailer with highest carrying capacity. Ideal for our largest watercraft.

MOVE Trailers

Note: Please contact your nearest Sea-Doo dealer for suggested retail prices of trailers.

Double Trailers

Aluminum MOVE II

With leaf spring suspension
Available with or without marine jack

Overall length	15' 3"	Coupler	2.0"
Overall width	8' 4"	Approx. weight	367 lb
Width between fenders	7' 4"	Carrying capacity	2,450 lb
Overall height (fenders)	27.1"	Tire size	ST185/80D13C
Overall height (winch)	34.7"		



Aluminum

Aluminum is a must for saltwater riders.

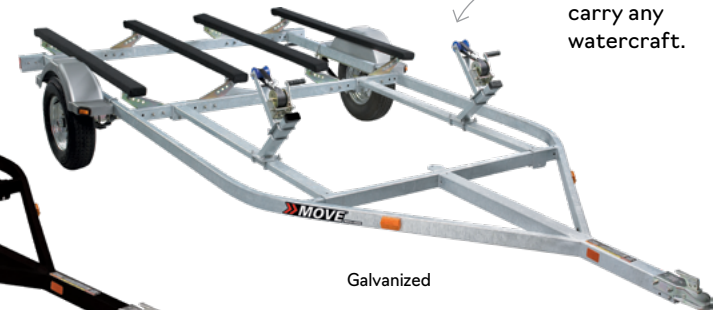
MOVE II

With leaf spring suspension
Available with or without marine jack

Overall length	16' 10"
Overall width	8' 2"
Width between fenders	6' 9"
Overall height (fenders)	29"
Overall height (winch)	39"
Coupler	2.0"
Approx. weight	485 lb
Carrying capacity	2,456 lb
Tire size	ST185/80D13



Painted Black



Galvanized

Ideal to carry any watercraft.

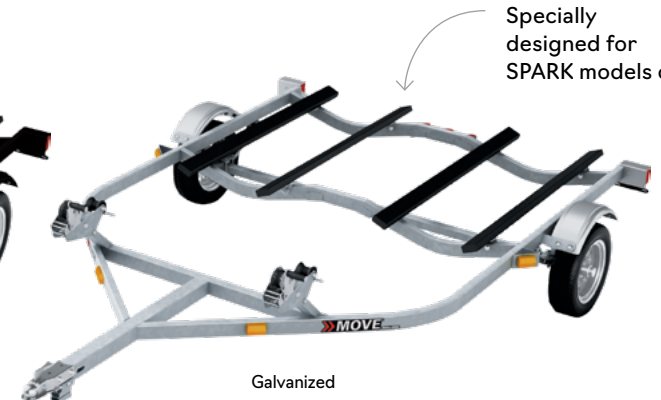
SPARK MOVE II

With leaf spring suspension
Available with or without marine jack

Overall length	12' 5"
Overall width	8' 4"
Width between fenders	7' 1"
Overall height (fenders)	24"
Overall height (winch)	34"
Coupler	2.0"
Approx. weight	340 lb
Carrying capacity	1,220 lb
Tire size	4.80" x 12"



Painted Black



Galvanized

Specially designed for SPARK models only.

MOVE Trailers

KEY FEATURES

	Single				Double		
	Aluminum MOVE I Extended 1250	MOVE I1250	MOVE I Extended 1250	MOVE I Extended 1500	Aluminum MOVE II	MOVE II	SPARK MOVE II
Rugged and durable hot-dipped galvanized finish (optional)		•	•	•		•	•
Rugged and durable black powder-coat finish (standard)		•	•	•		•	•
Aluminum alloy frame for better corrosion resistance	•				•		
2 adjustable wooden bunks with carpet	•	•	•	•			
4 adjustable wooden bunks with carpet					•	•	
4 non-adjustable wooden bunks with carpet							•
Adjustable winch straps	•	•	•	•	•	•	•
Non-adjustable winch straps							•
Multi-adjustable axle (torsion only)	•	•	•	•			
Torsion rubber suspension (for smoother rides) (optional on MOVE I)	•						
Leaf spring suspension (optional on MOVE I)			•	•	•	•	•
Tire size: 4.80" x 12"	•	•	•	•			•
Tire size: 5.30" x 12"				•			
Tire size: ST185/80D13					•	•	
Ground wired	•	•	•	•	•	•	•
Fully enclosed wiring harness	•	•	•	•	•	•	•
Submersible lights	•	•	•	•	•	•	•
Suspended plastic fender for better splash protection	•	•	•	•			•
Suspended "stand on" plastic fender for better splash protection					•	•	
No-maintenance sealed bearing	•	•	•	•	•	•	•

Warranty

One year complete warranty and 5 years on frame and axle

Trailer Accessories

Bolt-On† Retractable Ratcheting Tie-Downs

- Perfect for transporting your watercraft or securing loads.
- Mount easily: bolts on any flat surface (e.g. truck bed or frame).
- 1" x 6' (2.5 cm x 1.83 m) tie-down strap with heavy-duty stitching that delivers a 500 lb (226 kg) working load strength and 1,500 lb (680 kg) break strength.
- Convenient retractable push button automatically slackens, spools and stores away strap, while the ratchet mechanism tightens the strap snugly to secure your vehicle or load into place.
- Rubber ratcheting handle provides firm grip, and the hook is vinyl-coated to protect whatever surface it hooks into.
- Sold in pairs.

295100841
\$41.99



Ratchet Tie-Downs

- Designed specifically for strapping a watercraft to a trailer.
- Custom 4-hook system is ideal for quick installation/removal without separating strap from ratchet.
- Fingertip tension adjustment with deluxe ratchet.
- 1" (2.5 cm) Sea-Doo branded polyester strap features hull protector pads, extra strap holder and coated hooks.
- Sold individually.

All watercraft (except SPARK)
295100389
\$30.99



Ratchet Tie-Downs

- 400 lb (181 kg) safe working load.
- 1" x 10' (2.5 cm x 3 m) strap with Sea-Doo, Ski-Doo and Can-Am logos.
- Deluxe ratchet with rubber handle.
- Coated S hooks.
- Pack of 2.

All watercraft
860200447
\$22.99



Marine Jack

- 1,200 lb (544 kg) heavy-duty swivel mount caster jack.
- Corrosion resistant zinc plated finish.
- Provides 12" (30 cm) of screw travel and up to 27" (69 cm) of lift.
- Available pre-installed on all models (optional).

MOVE I and II Trailers
295100731
\$104.99



Coupler Stand

- Prevents coupler from hitting the ground when trailer is not hitched to a vehicle.
- Includes hardware necessary for installation.
- Standard on some models.

MOVE I and II Trailers
295100594
\$33.99



Spare Wheel Support

- Includes hardware necessary for installation.

MOVE I
295100500 - Painted Black (Fits on steel frame)
\$82.99

Fits all trailers (steel and aluminum frames)
295100765 - Zinc Coated
\$104.99

MOVE II
295100501 - Zinc Coated (Fits on steel frame)
\$51.99



Others

295100501

Spare Wheel

- Steel spare wheel and tire.

MOVE I 1250 and SPARK MOVE II 12" (30 cm)
295100409 - Galvanized
295100410 - Painted Silver
\$124.99

MOVE I 1500 12" (30 cm)
295100592 - Galvanized
295100593 - Painted Silver
\$159.99

MOVE II 13" (33 cm)
295100502 - Galvanized
295100503 - Painted Silver
\$244.99



See your certified BRP dealer for details.

Sea-Doo Apparel

Functional. Comfortable. Attractive.

Innovative Sea-Doo apparel is the perfect way to bring your Sea-Doo life beyond typical boundaries and live for days spent on the water.



No matter your riding style, Sea-Doo has you covered. Choose from three categories of Personal Flotation Device to suit your needs: the Ultimate, the Athletic or the All-Purpose Personal Flotation Device.

Apparel

- 29 Personal Flotation Device
- 36 Riding Suit
- 37 Wetsuits and Rashguards

- 40 Eyewear
- 41 Footwear
- 42 Sportswear



Mesh uppers and perforated insoles for fast water evacuation



Personal Flotation Device

The Ultimate

PVC-free and sustainable. Feels light even when wet and maximizes air flow, because the more comfortable you are, the better and longer you will ride.



AIRFLOW PERSONAL FLOTATION DEVICE Technical Features

- ✓ Ultra-durable ecoprene outer shell.
- ✓ Comfortable fit.
- ✓ YKK[®] front zipper.
- ✓ GAIA memory foam insert – the most soft and comfortable foam on the market.
- ✓ Side panels in stretch lining fabric for improved comfort.
- ✓ Armholes cut large for riding comfort.
- ✓ Loop at back neck to attach your goggles to your vest.
- ✓ D-ring for key lanyard.

AIR FLOW SYSTEM

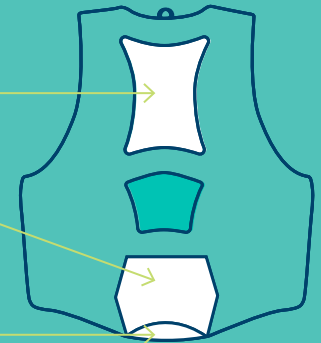
Interior EVA molding that keeps the personal flotation device surface away from the skin.

LUMBAR COMFORT ZONE

Extra foam padding to minimize the pressure on your lower back while bolstering support.

MESH PANEL

Drains away excess water for quick drying and thermal regulated comfort.



- Coast Guard approved
- Quick dry
- Added ventilation
- Light even when wet
- Ease of movement
- Fitted

NEW

Men's Airflow

- 100% Polyester
- 100% GAIA Biofoam
- S, M, L, XL, 2XL, 3XL
- Black (90)
- 285938
- \$149.99



Back

NEW

Ladies' Airflow

- 100% Polyester
- 100% GAIA Biofoam
- S, M, L, XL, 2XL, 3XL
- Raspberry (39)
- 285940
- \$149.99



Back

NEW

Men's Airflow Aloha Edition

- 100% Polyester
- 100% GAIA Biofoam
- S, M, L, XL, 2XL, 3XL
- Red (30)
- 285960
- \$154.99



Back

NEW

Ladies' Airflow Aloha Edition

- 100% Polyester
- 100% GAIA Biofoam
- S, M, L, XL, 2XL, 3XL
- Pink (36)
- 285962
- \$154.99



Back

Personal Flotation Device

The Athletic

Matches your active riding style, can handle rugged daily – and all-day – use. Snug-fitting and comfortable to intuitively shadow your body's movements, and roomy where it counts not to hinder your mobility.



FREEDOM PERSONAL FLOTATION DEVICE Technical Features



Coast Guard approved



Quick dry



Light even when wet



Ease of movement



Fitted

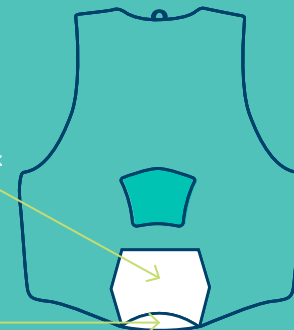
- ✓ Ultra-durable ecoprene outer shell.
- ✓ Combination of PVC and polyethylene foam inserts.
- ✓ Comfortable fit.
- ✓ YKK[®] front zipper.
- ✓ Segmentations at front and back for better comfort and ease of movement.
- ✓ Side panels in stretch lining fabric for improved comfort.
- ✓ Armholes cut large for riding comfort.
- ✓ Loop at back neck to attach your goggles to your vest.
- ✓ D-ring for key lanyard.

LUMBAR COMFORT ZONE

Extra foam padding to minimize the pressure on your lower back while bolstering support.

MESH PANEL

Drains away excess water for quick drying and thermal regulated comfort.



Personal Flotation Device



NEW

Men's Freedom

- 100% Polyester
- 50% PVC Foam, 50% Expandable Polyethylene

S, M, L, XL, 2XL, 3XL
 Starlight Blue (84),
 Sunburst Yellow (96)

285942
 \$119.99



NEW

Ladies' Freedom

- 100% Polyester
- 50% PVC Foam, 50% Expandable Polyethylene

S, M, L, XL, 2XL, 3XL
 Turquoise (Aqua) (76)

285945
 \$119.99



Force Pullover

- Ultra-durable neoprene outer shell.
- Soft PVC foam inserts.
- Anatomical cut with large armholes and strategically placed mesh drain panels for riding comfort.
- YKK® front zipper.
- Loop at back neck to attach your goggles to your vest.
- D-ring for key lanyard.
- 90% Neoprene, 10% Polyester
- 100% PVC Foam

XS/S, M, L, XL, 2XL/3XL
 Black (90)

286759
 \$139.99



Back


 Coast Guard
 approved


 Warm against
 the skin


 Ease of
 movement


 Fitted

Personal Flotation Device

The All-Purpose

Combines great value with high-quality components that won't compromise look, safety, comfort and functionality. Easy-fitting so it can be shared by a wide range of people, and versatile so it can be used for a variety of watersports.



MOTION PERSONAL FLOTATION DEVICE Technical Features



Coast Guard approved



Low water absorption



Lightweight



Affordable and best value

- ✓ Heavy-duty polyester outer shell.
- ✓ Polyethylene foam inserts.
- ✓ Segmented foam at back bottom for increased comfort while seated.
- ✓ Custom fit based on your size.
- ✓ Armholes cut large for riding comfort.
- ✓ Loop at back neck to attach your goggles to your vest.
- ✓ D-ring for key lanyard.

Loop at back neck to attach your goggles to your vest.



Men's Motion

- 100% Polyester
- 100% Expandable Polyethylene

S, M, L, XL, 2XL, 3XL, 4XL

Yellow (10), Red (30),
Green (70), Blue (80)

286768
\$69.99



Ladies' Motion

- 100% Polyester
- 100% Expandable Polyethylene

XS, S, M, L, XL, 2XL, 3XL

Grey (09), Orange (12), Black (90)

286771
\$69.99



Personal Flotation Device

NEW

Navigator

- Unisex, value-built personal flotation device.
- Heavy-duty polyester outer shell.
- Dual-sized, making it perfect for sharing.
- Polyethylene foam inserts.
- Armholes cut large for riding comfort.
- Loop at back neck to attach your goggles to your vest.
- D-ring for key lanyard.
- Coast Guard approved.
- 100% Polyester
- 100% Expandable Polyethylene

XS, S/M, L/XL, 2XL/3XL

Charcoal Grey (07), Navy (89)

285947

\$49.99



Junior

NEW

Junior Explorer

- For kids 50 to 90 lb.
- Ultra-durable ecoprene outer shell.
- Combination of PVC and polyethylene foam inserts.
- YKK® front zipper.
- Armholes cut large for riding comfort.
- Quick-drying, but light even when wet.
- Fitted for ease of movement.
- Coast Guard approved.
- 100% Polyester
- 50% PVC Foam, 50% Expandable Polyethylene

L (55-88 lb)

Blue (80)

285954

\$79.99



NEW

Kids' Sandsea

- Heavy-duty polyester outer shell.
- Polyethylene foam inserts.
- Armholes cut large for comfort.
- Coast Guard approved.
- 100% Polyester
- 100% Expandable Polyethylene

M (33-55 lb),
L (55-88 lb)

Charcoal Grey (07)

285950

\$39.99



NEW

Kids' Sandsea

- Heavy-duty polyester outer shell.
- Polyethylene foam inserts.
- Armholes cut large for comfort.
- Personal flotation device size Small: Comes with Coast Guard approved pillow.
- Certified for general boating use, not watercraft.
- Coast Guard approved.
- 100% Polyester
- 100% Expandable Polyethylene

S (0-30 lb)

Navy (89)

285951

\$39.99



Personal Flotation Device

Find your perfect personal flotation device

Choose from three categories of personal flotation device to suit your needs.



THE ULTIMATE

Incredible performance in an ultralight package.



THE ATHLETIC

Stays comfy when actively maneuvering.



Airflow	Airflow Aloha Edition	Freedom	Force Pullover
\$149.99	\$154.99	\$119.99	\$139.99
Men's • 285938 Ladies' • 285940	Men's • 285960 Ladies' • 285962	Men's • 285942 Ladies' • 285945	286759
Men's • Black (90) Ladies' • Raspberry (39)	Men's • Red (30) Ladies' • Pink (36)	Men's • Starlight Blue (84), Sunburst Yellow (96) Ladies' • Turquoise (Aqua) (76)	Black (90)
S, M, L, XL, 2XL, 3XL	S, M, L, XL, 2XL, 3XL	S, M, L, XL, 2XL, 3XL	XS/S, M, L, XL, 2XL/3XL

Personal Flotation Device



THE ALL-PURPOSE

A fantastic all-rounder with great value.



Motion	Navigator	Junior Explorer	Kids' Sandsea	
\$69.99	\$49.99	\$79.99	\$39.99	\$39.99
Men's • 286768 Ladies' • 286771	285947	285954	285951	285950
Men's • Yellow (10), Red (30), Green (70), Blue (80) Ladies' • Grey (09), Orange (12), Black (90)	Charcoal Grey (07), Navy (89)	Blue (80)	Navy (89)	Charcoal Grey (07)
Men's • S, M, L, XL, 2XL, 3XL, 4XL Ladies' • XS, S, M, L, XL, 2XL, 3XL	XS, S/M, L/XL, 2XL/3XL	L (55-88 lb)	S (0-30 lb)	M (33-55 lb), L (55-88 lb)

Riding Suit

Function and comfort

Extend the season and prolong the days with these windproof, water-resistant, breathable and quick-dry light jackets and pants. Go from riding waves to the clubhouse with seamless style.



ELEMENT RIDING JACKET AND PANTS Technical Features

Element Riding Jacket

- ✓ 100% polyester.
- ✓ Light jacket, water-resistant, windproof and quick-dry.
- ✓ Light soft shell ergo design offers great comfort.
- ✓ Fit to be worn under the personal flotation device.
- ✓ Slim fit to keep snug against the wind and keep warmth inside.
- ✓ 1 interior pocket.
- ✓ 2 exterior hand pockets.
- ✓ Soft micro poly brushed interior for additional comfort.
- ✓ Velcro[®] tab at wrist for adjustment.

Element Riding Pants

- ✓ 100% polyester.
- ✓ Comfort-designed, water-resistant, windproof, breathable and quick-dry.
- ✓ Brushed-knit thermal fleece interior.
- ✓ Supratex[®] at seat and knees for extra comfort and durability.
- ✓ Comfort waistband and adjustment buckle.
- ✓ 2 zippered exterior hip pockets.
- ✓ Lower side leg zipper to snug the ankle while riding.

Men's Element Riding Jacket

S, M, L, XL, 2XL, 3XL
Black (90)
440799
\$159.99



Men's Element Riding Pants

S, M, L, XL, 2XL, 3XL
Black (90)
441699
\$124.99



Ladies' Element Riding Jacket

XS, S, M, L, XL, 2XL
Black (90)
440798
\$159.99



Ladies' Element Riding Pants

XS, S, M, L, XL, 2XL
Black (90)
441622
\$124.99





Wetsuits / Rashguards

Style and warmth

Keeping you warm and comfortable no matter where the ride takes you.

MONTEGO JACKET AND PANTS Technical Features

- ✓ 90% Neoprene, 10% Nylon.
- ✓ 3 mm neoprene.
- ✓ Athletic fit.
- ✓ Flatlock stitch construction prevents chafing.
- ✓ Super stretch fabric at sides for better mobility.

Montego Pants

- ✓ Supratex[†] at seat and knees for durability.
- ✓ High-waisted flattering design.

Men's Montego Jacket

S, M, L, XL, 2XL
Red (30)
286725
\$89.99



Men's Montego Pants

S, M, L, XL, 2XL
Black (90)
286724
\$99.99



Ladies' Montego Jacket

XS, S, M, L, XL, 2XL
Turquoise (Aqua) (76)
286727
\$89.99



Ladies' Montego Pants

XS, S, M, L, XL, 2XL
Black (90)
286726
\$99.99



Wetsuits / Rashguards



ESCAPE SHORTY WETSUIT Technical Features

- ✓ 90% Neoprene, 10% Nylon.
- ✓ 3 mm neoprene.
- ✓ Glideskin[®] at arm and leg hems for sealing.

Open collar for ease of neck movement.

Back zipper.



NEW

Men's Escape Shorty Wetsuit

XS, S, M, L, XL, 2XL, 3XL
Navy (89)
286788
\$129.99



NEW

Ladies' Exotic Shorty Wetsuit

XS, S, M, L, XL, 2XL
Navy (89)
286789
\$129.99



NEW

Men's Neoprene Riding Jacket

- 90% Neoprene, 10% Nylon.
- 2 mm neoprene jacket that will provide the right amount of warmth and protection.
- Front zippered pockets.
- Cord adjustments at hood.
- Hook and loop adjustment at wrist.
- Can be worn independently or over a personal flotation device.

S, M, L, XL, 2XL, 3XL
Orange (12)
286787
\$184.99



Men's Neoprene Shorts

- 90% Neoprene, 10% Nylon.
- 2 mm neoprene riding shorts.
- Drawstring at waist.
- Flatlock stitch construction prevents chafing.

S, M, L, XL, 2XL, 3XL
Black (90)
286720
\$54.99



NEW

Ladies' Neoprene Shorts

- 90% Neoprene, 10% Nylon.
- 2 mm neoprene riding shorts.
- Yoga-type improved waist cut.
- Flatlock stitch construction prevents chafing.

XS, S, M, L, XL, 2XL
Black (90)
286786
\$54.99



Back

NEW

Sea-Doo Sunset Tech Zip-Up

- 95% Polyester, 5% Spandex.
- Full zipped hoodie.

S, M, L, XL, 2XL, 3XL

Navy (89)

454308

\$114.99



Wetsuits / Rashguards



NEW

Men's Signature Short Sleeve Rashguard

- 80% Nylon, 20% Spandex.
- SPF 50+ UV Lycra protection.
- Flatlock stitch construction.
- Athletic fit.

XS, S, M, L, XL, 2XL

Red (30), Black (90)

286794

\$49.99



NEW

Ladies' Signature Short Sleeve Rashguard

- 85% Polyester, 15% Spandex.
- SPF 50+ UV Lycra protection.
- Flatlock stitch construction.
- Athletic fit.

S, M, L, XL

Black (90)

286795

\$49.99



NEW

Ladies' Exotic Short Sleeve Rashguard

- 85% Polyester, 15% Spandex.
- SPF 50+ UV Lycra protection.
- Flatlock stitch construction.
- Athletic fit.

S, M, L, XL

Navy (89)

454312

\$59.99



NEW

Camo Long Sleeve Rashguard

- 85% Polyester, 15% Spandex.
- SPF 50+ UV Lycra protection.
- Relaxed fit.

XS, S, M, L, XL, 2XL

Camo (37)

454310

\$59.99



NEW

Catching Waves Long Sleeve Rashguard

- 85% Polyester, 15% Spandex.
- SPF 50+ UV Lycra protection.
- Relaxed fit.

XS, S, M, L, XL, 2XL

Blue (80)

454309

\$64.99



NEW

Ladies' Exotic Long Sleeve Rashguard

- 85% Polyester, 15% Spandex.
- SPF 50+ UV Lycra protection.
- Relaxed fit.

XS, S, M, L, XL, 2XL

Navy (89)

454318

\$74.99



NEW

Ladies' Sand&Sun Long Sleeve Rashguard

- 85% Polyester, 15% Spandex.
- SPF 50+ UV Lycra protection.
- Flatlock stitch construction.

XS, S, M, L, XL, 2XL

Turquoise (Aqua) (76)

454319

\$59.99



Eyewear

Eyewear that's made for the water



Sea-Doo Riding Goggles

- Anti-fog colored chrome lenses.
- Indirect ventilation frame.
- Adjustable strap system.
- Goggles-to-PFD attachment safety cord.
- Optional Riding Goggles RX Insert (448624) (sold separately).

One size
Silver (08), Orange (12), Green (70)
448623
\$104.99



Sea-Doo Floating Sunglasses

- Polarized colored chrome lenses.
- Air-injected arms for floatability and lightweight.
- Adjustable safety strap system.

One size
Silver (08), Orange (12), Green (70)
448622
\$79.99



Riding Goggles RX Insert

- Designed for the Sea-Doo Riding Goggles (448623).
- Go to your optics store and most will be able to fit prescription lenses tailored to your needs.

One size
Clear (00)
448624
\$29.99



RIDING BOOTS AND WATER SHOES

Technical Features

- ✓ Antimicrobial treatment.
- ✓ Lightweight EVA midsoles.
- ✓ All-around protective urethane coating.
- ✓ Mesh uppers and perforated insoles for fast water evacuation.
- ✓ Non-slip and non-marking outsoles.

Sea-Doo Water Shoes

- Amphibian low cut shoes that offer protection on the water and running-shoe-like performance outside the water.

7, 8, 9, 10, 11, 12, 13
Charcoal Grey (07)
444242*
\$114.99



Sea-Doo Riding Boots

- Made for performance riding, these amphibian mid-cut boots will allow you to ride hard while protecting your ankles from impact againsts the hull.

7, 8, 9, 10, 11, 12, 13
Black (90)
444243*
\$124.99



Sea-Doo Carbon Flip-Flops

- Soft synthetic strap.
- Lightweight and comfortable sole.
- Anti-slip outsole design.

7, 8, 9, 10, 11, 12, 13
Black (90)
444245*
\$34.99



Sea-Doo Parlee Flip-Flops

- Soft synthetic strap.
- Lightweight and comfortable sole.
- Anti-slip outsole design.

7, 8, 9, 10, 11, 12, 13
Brown (04)
444246*
\$34.99



Sea-Doo Neoprene Boots

- 5 mm double-glued and blind stitched neoprene construction.
- Non-corrosive heavy-duty zipper.
- Flexible rubber toe and heel protection caps.
- Molded outsole with non-slip tread design.
- Anti-slip insole.

5, 6, 7, 8, 9, 10, 11, 12, 13
Black (90)
286702*
\$69.99



*For European footwear equivalencies, see p.45.

Footwear



Gloves and Sportswear

Wear your passion



Neoprene Gloves

- 1.5 mm super stretch neoprene for superior comfort and mobility.
- Anti-slip rubberized print at palms.
- Pre-shaped fingers.
- 90% Neoprene, 10% Nylon.

XS, S, M, L, XL, 2XL
Black (90)
286729
\$59.99



Attitude Gloves

- Gloves with spandex finger gussets and stretch fabric for ease of movement.
- Double stitching in high stress areas for durability.
- Clarino¹ Nash palm material and rubberized Pro-Grip at palm to ensure a solid hold.
- Adjustable Velcro² wrist closure.
- 35% Polyester, 45% Polyurethane, 15% Lycra³ Spandex, 4% Polyamide, 1% Chloroprene Rubber.

NEW

Attitude Full-Finger Gloves

XS, S, M, L, XL, 2XL, 3XL
Red (30)
286790
\$39.99



NEW

Attitude Shorty Gloves

XS, S, M, L, XL, 2XL, 3XL
Green (70)
286791
\$32.99



Wide Brim Hat

- Keeps hot sun out while cool breeze flows in from side air vents.
- Snap-up sides add stability in windy conditions and broaden visibility.
- Wind cord and size cinch system secures hat firmly on your head.
- Dark underbrim blocks glare reflected from water surface.
- 100% Cotton.

One size
NEW Grey (09),
Khaki (05)
454294
\$39.99



Sea-Doo Rag

- Fast-drying neck protection while on the water.
- Lightweight, moisture-wicking, breathable fabric.
- SPF 50 UV protection.
- Instantly doubles as a headband or facemask.
- 100% Polyester.

One size
NEW Camo (37),
White (01)
454295
\$19.99



NEW

Sea-Doo Beach Hoodie

- Hooded sweater.
- Kangaroo pocket.
- 60% Cotton, 40% Polyester Fleece.

S, M, L, XL, 2XL, 3XL
Navy (89)
454306
\$94.99



NEW

Sea-Doo Life Mesh Cap

- Lightweight cap appropriate for summertime.
- Adjustable cap with plastic snap at back.
- 80% Cotton, 20% Polyester.

One size
 Camo (37), Khaki (05),
 Navy (89)
 454418
 \$29.99



NEW

Aloha Cap

- Lightweight cap with mesh at back.
- Adjustable with plastic strap at back.
- 75% Polyester, 25% Cotton.

One size
 Black (90)
 454370
 \$29.99



NEW

Sea-Doo Classic Cap

- Adjustable with plastic strap at back.
- 100% Cotton.

One size
 Black (90), Khaki (05),
 Purple (40)
 286792
 \$24.99



NEW

Ladies' Aloha Cap

- Lightweight cap with mesh at back.
- Adjustable with plastic strap at back.
- 75% Polyester, 25% Cotton.

One size
 Navy (89)
 454411
 \$29.99



Sportswear

Sea-Doo Classic Polo

- Sea-Doo logo at shoulder.
- 100% Cotton Pique.

S, M, L, XL, 2XL, 3XL
 Navy (89), White (01)
 286691
 \$54.99



NEW

Sea-Doo Signature T-Shirt

- Relax tee with round neck.
- 100% Cotton Jersey.

S, M, L, XL, 2XL, 3XL
 Heather Grey (27),
 Blue (80), White (01)
 454303
 \$29.99



NEW

Throttle T-Shirt

- Relax tee with V-neck.
- 100% Cotton Jersey.

S, M, L, XL, 2XL, 3XL
 Charcoal Grey (07),
 Yellow (10)
 454305
 \$29.99



NEW

Lake Vibe T-Shirt

- Relax tee with round neck.
- 100% Cotton Jersey.

S, M, L, XL, 2XL, 3XL
 Black (90), Khaki (05)
 454307
 \$29.99



NEW

Aloha Pocket T-Shirt

- Relax tee with round neck.
- Featuring a chest pocket with the Aloha print and Sea-Doo logo.
- 100% Cotton Jersey.

S, M, L, XL, 2XL, 3XL
 Black (90)
 454409
 \$34.99



Sportswear



Sea-Doo Dry Pouch

- 1 L volume splash-proof protection for your small essentials.
 - Made of lightweight material with waterproof coating.
 - See-through TPU window and dry bag style roll-up top with clips.
 - Belt hook for easy carrying.
 - Phone not included.
- Note: Not intended for immersion service.

One size
 Black (90), Yellow (10)
 469540
 \$24.99



NEW

Ladies' Sea-Doo Signature T-Shirt

- Fitted feminine T-shirt cut in stretchable fabric.
- V neck.
- 95% Cotton, 5% Spandex Jersey.

XS, S, M, L, XL, 2XL
 Black (90), Blue (80), White (01)
 454302
 \$29.99



NEW

Ladies' Aloha Pocket T-Shirt

- Relax tee with round neck.
- Featuring a chest pocket with the Aloha print and Sea-Doo logo.
- 95% Cotton, 5% Spandex Jersey.

XS, S, M, L, XL, 2XL
 White (01)
 454410
 \$34.99



Kids'/Teens'

NEW

Boys' Pocket T-Shirt

- Relax tee with round neck.
- 100% Cotton Jersey.

2, 3-4, 5-6, 7-8, 10-12, 14-16
 Blue (80)
 454314
 \$29.99



NEW

Girls' Pocket T-Shirt

- Relax tee with round neck.
- 95% Cotton, 5% Spandex Jersey.

2, 3-4, 5-6, 7-8, 10-12, 14-16
 Pink (36)
 454315
 \$29.99



How to measure

For best results, have someone else take measurements. Measure body in swimsuit or undergarments. Tape must be snug but not tight. If measurements fall between two sizes, order the larger size.

Chest

Measure under your arms, around the fullest part of your chest.

Waist

Measure around your waist at the narrowest place.

Hips

Stand with legs together, measure around the fullest part of your hips, ensuring the tape is level.

Arm Length

Let your arms hang down on the side in a slightly bent position. Measure from the center of the back of your neck, along the length of your arm, to the wrist.

Inseam

Without shoes, from crotch to the floor.



Sizing Chart

Size up for the perfect ride

Personal Flotation Device

Men's Freedom and Airflow

Sizes	S	M	L	XL	2XL	3XL
Chest (in)	33-37	37-41	41-45	45-49	49-53	53-57

Ladies' Freedom and Airflow

Sizes	S	M	L	XL	2XL	3XL
Chest (in)	30-33	33-37	37-41	41-45	45-49	49-53

Force Pullover

Sizes	XS/S	M	L	XL	2XL/3XL
Chest (in)	34-36	37-39	39-41	41-43	44-47

Men's Motion

Sizes	S	M	L	XL	2XL	3XL	4XL
Chest (in)	84-94	37-41	41-45	45-49	49-53	53-57	57-61

Ladies' Motion

Sizes	XS	S	M	L	XL	2XL	3XL
Chest (in)	28-32	32-36	36-40	40-44	45-49	49-53	53-57

Navigator

Sizes	XS	S/M	L/XL	2XL/3XL
Chest (in)	28-32	32-40	40-52	50-60

Jr. Explorer

Sizes	L		
Weight	55-88 lb		

Kids' Sandsea

Sizes	S	M	L
Weight	0-30 lb	30-50 lb	50-90 lb

Wetsuits, Athletic Fit Rashguards and Neoprene Shorts

Men's

Sizes	XS	S	M	L	XL	2XL	3XL
Chest (in)	34-38	36-40	38-42	40-44	42-46	44-48	46-50
Waist (in)	28-32	30-34	32-36	34-38	36-40	38-42	40-44
Hips (in)	34-38	36-40	38-42	40-44	42-46	44-48	46-50
Height	5'4"-5'6"	5'5"-5'7"	5'8"-6'	5'9"-6'1"	6'1"-6'3"	6'2"-6'4"	6'3"-6'5"
Weight (lb)	110-160	120-170	130-180	150-200	170-220	190-240	210-270

Ladies'

Sizes	XS	S	M	L	XL	2XL
Chest (in)	32-35	34-37	36-39	38-41	40-43	42-45
Waist (in)	24-26	26-28	28-30	30-32	32-34	34-36
Hips (in)	34-36	36-38	38-40	40-42	42-44	44-46
Height	5'2"-5'4"	5'3"-5'5"	5'5"-5'7"	5'6"-5'8"	5'7"-5'9"	5'9"-6'1"
Weight (lb)	90-140	100-150	110-160	130-180	150-200	170-220

Riding Suit, Relaxed Fit Rashguards and Sportswear

Men's

Sizes	XS	S	M	L	XL	2XL	3XL	4XL	5XL
Chest (in)	33-35	35-38	38-41	41-45	45-49	49-53	53-57	57-61	61-65
Waist (in)	27-29	29-32	32-35	35-39	39-43	43-48	48-52	52-57	57-62
Hips (Seat) (in)	33-35	35-38	38-41	41-45	45-49	49-53	53-57	57-61	61-65
Arm length (in)	30	31	32	33	34	35	35	36	36
Inseam (in)	31	31½	32	32	32	32	32	32	32

Ladies'

Sizes	2XS	XS	S	M	L	XL	2XL
Chest (in)	30-32	32-34	34-36	36-39	39-42	42-46	46-50
Waist (in)	24-26	26-28	28-30	30-33	33-36	36-40	40-44
Low Hips (Seat) (in)	33-35	35-37	37-39	39-42	42-45	45-49	49-53
Arm Length (in)	30	30	30	30½	31	31½	32
Inseam (in)	30	30	30	30	30	30	30

Gloves (measure palm width)

Sizes	XS	S	M	L	XL	2XL	3XL
Palm (in)	3	3¼	3½	4	4½	5	5½

Footwear (measure foot length)

Sea-Doo Riding Boots, Water Shoes and Flip-Flops

Sizes (US)	7	8	9	10	11	12	13
------------	---	---	---	----	----	----	----

Sizes (EU)*	39½	41	42	43	44½	46	47
-------------	-----	----	----	----	-----	----	----

Sea-Doo Neoprene Boots

Sizes (US)	5	6	7	8	9	10	11	12	13
------------	---	---	---	---	---	----	----	----	----

Sizes (EU)*	36	37-38	39	40-41	42	43-44	45	46-47	48
-------------	----	-------	----	-------	----	-------	----	-------	----

*Use US codes to complete the part number on your order.

What code represents your size?

- Find your size.
- The corresponding code is THE CODE you use to complete the part number on your order. Example: 440227_90
Size: M = Code "06", therefore 4402270690

Size	Code	Size	Code	Size	Code
ONE SIZE	00	3XL	16	6	25
2XS	01	4XL	18	7	27
XS	02	XS/S	90	8	28
S	04	S/M	72	9	29
M	06	L/XL	73	10	30
L	09	2XL/3XL	74	11	31
XL	12	4XL/6XL	75	12	32
2XL	14	5	24	13	33

Lifestyle and Gifts

Take your Sea-Doo pride farther than ever before

Sea-Doo Lifestyle Collection

More than 65 products for home, garage, office and travel!



Lifestyle and Gifts



1 Beach Towel 2 Inflatable Island (6-person) 3 Inflatable Flip-Flop 4 Youth Snorkeling Set 5 Floating Key Chain 6 One Person Deck Tube
7 Waterproof Bag 8 Inflatable PWC for Kids 9 24-Can Cooler Bag 10 Stand Up Paddle Board 11 Adult Snorkeling Set

Visit sea-doo.com/lifestyle to view the collection or check out the selection at your authorized Sea-Doo dealer.

Post-Riding

Post-Riding

The last step before putting the cover on, post-ride maintenance will extend the life of your watercraft over the long run.



Salt-Away[†]

- Mixed with water, it washes away the salt and leaves a protective coating on the surface to prevent rust and corrosion.
- Can also be used for trailer wash and maintenance.

Refill

295100219 · 1 US gallon (3.785 L)

\$67.99

295100220 · 1 quart (946 ml)

\$36.99

Concentrate with dispenser

295100218 · 1 quart (946 ml)

62.99



Salt-Away[†] - Dispenser Unit

295100221

\$46.99



Flush Kit

- A must to help keep your engine corrosion-free and to maximize performance.
- Kit includes all necessary components for a hassle-free flush.

SPARK (Standard on 2015 and up models)

295100555

\$46.99

For watercraft that do not yet have a "T" fitting and don't have the threaded water outlet on the ride shoe.

295500068

\$27.99



Flush Adapter

- For most watercraft models with a threaded water outlet fitting on the ride shoe.

295500473

\$10.49

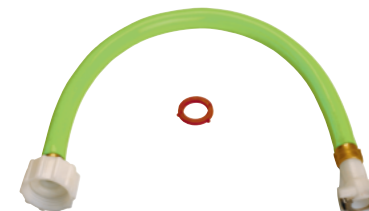


Coupler Hose

- For most watercraft models that already have a "T" fitting.
- Also for watercraft models that use the flush adapter on the ride shoe water outlet.

295500258

\$33.99



YUASA[†] Batteries

• Top-of-the-line models from the preferred original equipment battery supplier in North America.

18 amps, Wet (YTX20L)
Factory activated (Non-spillable)

410301203

\$149.99

30 amps, Dry (YB30CL-B)

278001882

\$174.99

30 amps, Wet (YTX30L)

Factory activated (Non-spillable)

515176151

\$209.99



Replacement Parts

Replacement Parts

Our extensive range of authorized replacement parts is just an order away, in-store and online.

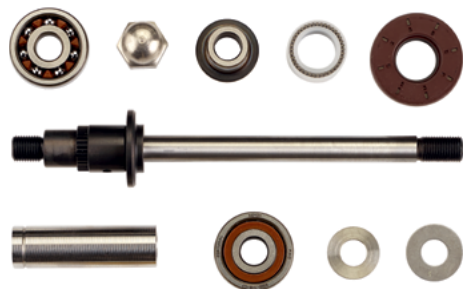
Supercharger Repair Kit

- Complete kit to rebuild your supercharger.
- Made of quality Sea-Doo genuine parts and metal washers to increase reliability.

Fits all 215, 255 and 260 hp models

420881102

\$488.99



See your certified BRP dealer to match the right parts to your watercraft.

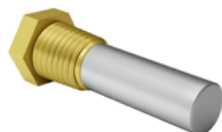
Sacrificial Anodes

- Sacrificial anodes are specifically designed to protect parts of your personal watercraft that are underwater from galvanic corrosion.
- Like the name implies, they essentially "sacrifice" themselves by absorbing the electrochemical process of corrosion to prevent metal components like the impeller, jet pump nozzle or engine from being "eaten away" instead.
- Galvanic corrosion can cause major damage if not controlled.
- Inspect your sacrificial anode at least once a month. Replace it when it is 50% depleted.

1/4-18 NPT Anode for intercooler on models 260 and 300 hp (2016 and up)

271001942

\$15.99



Outside diameter: 26 mm

Height: 6 mm

271001920

\$15.99



Outside diameter: 26 mm

Height: 13 mm

271001813

\$17.99



Lift Kit

- Accurately lifts and positions your watercraft with a lift kit of nylon webbing and vinyl-coated steel lift plates.
- Lifting capacity of 1,200 lb (544 kg).
- Allows lifting from both straight and angled positions.

295100758

\$864.99



Ask your certified BRP dealer for details.

Replacement Parts

Impellers

- High-performance impellers designed specifically to enhance engine performances and calibration.
- Offer perfect fit with wear ring and driveshaft components.



Polished Impeller

300 hp (2016-2021)
267001050
\$419.99

Wear Rings

- Simple, cost-effective way to keep the pump system operating like new.
- Restore tight clearance to your impeller.
- Reduce cavitation and recover lost performance caused by a worn ring.



Heavy-Duty Wear Ring

- Simple, cost effective way to keep the pump system operating like new.
- Restore tight clearance to your impeller.
- Reduce cavitation and recover lost performance caused by a worn ring.

GTI, GTS, WAKE,
GTX (130, 170 and 155)
267001036
\$90.99



Engine	Model	Year	Sku	Price
60/90	SPARK	2014 and up	267000948	\$419.99
	GTI/GTS/GTI SE 90	2017-2019	267000919	\$419.99
	GTI 90	2020 and up	267001046	\$419.99
130/155	GTI 130&155/GTI SE 130&155/GTS 130	2009-2019	267000940	\$419.99
	GTI 130/GTI SE 130	2020 and up	267001044	\$419.99
	GTI PRO/GTX PRO	2020/2021	267001076	\$419.99
	WAKE 155	2011-2017	267000940	\$419.99
		2018-2019	267001019	\$419.99
	GTX 155/GTX S 155	2011-2017	267000943	\$419.99
		2018- 2019	267001019	\$419.99
FISH PRO 155	2019	267001019	\$419.99	
170	GTI SE 170/GTX 170/WAKE 170/FISH PRO	2020 and up	267001044	\$419.99
215	GTR 215	2014-2016	267000801	\$419.99
	GTX 215/GTX LTD 215/WAKE PRO 215	2011-2016	267000756	\$419.99
230	GTR 230/GTR-X 230	2017-2019	267000957	\$454.99
	GTX-LTD 230/WAKE PRO 230	2017	267000954	\$454.99
	GTX 230/GTX LTD 230/WAKE PRO 230 /RXT 230	2018	267001021	\$454.99
		2019	267001038	\$454.99
	GTX 230/GTX-LTD 230/WAKE PRO 230	2020 and up	267001045	\$454.99
255/260	GTX LTD iS & S 260	2012-2016	267000945	\$454.99
	RXP-X 255	2009-2011	267000994	\$454.99
	RXP-X 260	2012-2015	267000984	\$454.99
	RXT- X 260/RXT iS 255&260	2009-2010	267000974	\$454.99
	RXT 260/RXT AS 260/RXT iS 260	2011-2017	267000945	\$454.99
300	GTX LTD/RXT-X 300	2016 and up	267000951	\$454.99
	RXP-X 300	2016-2020	267000951	\$454.99
	RXP-X	2021	267001050	\$454.99

Model	Year	Sku	Price
SPARK	2014-2021	267000925	\$86.99
GTI 90	2017-2021	267000897	\$90.99
GTI SE 90	2017-2018	267000897	\$90.99
GTI PRO	2020	267001036	\$90.99
GTI/GTI SE 130	2009-2021	267000419	\$90.99
GTI SE 155	2009-2019	267000419	\$90.99
GTR 215	2012-2016	267000372	\$90.99
GTR 230 (all models)	2017-2021	267000917	\$90.99
GTS 90	2017-2019	267000897	\$90.99
GTS 130	2011-2016	267000419	\$90.99
GTS PRO 130 (Europe)	2011	267000419	\$90.99
GTS RENTAL 130	2014-2015	267000419	\$90.99
GTX 155	2009-2019	267000419	\$90.99
GTX S 155	2009-2017	267000419	\$90.99
GTX 170	2021	267000419	\$90.99
GTX 215/255/260	2009-2017	267000372	\$90.99
GTX 230	2018	267000372	\$90.99
	2019-2021	267000917	\$90.99
GTX Ltd 230/300	2016 -2021	267000917	\$90.99
GTX PRO	2021	267001036	\$90.99
FISH PRO	2019-2021	267000419	\$90.99
RXP-X (all models, except 300 hp)	2009-2015	267000372	\$90.99
RXP-X 300	2016-2021	267000917	\$90.99
RXT (all models, except 300 hp)	2009-2018	267000372	\$90.99
RXT 230	2019	267000917	\$90.99
RXT-X 300	2016-2021	267000917	\$90.99
WAKE 155	2009-2019	267000419	\$90.99
WAKE 170	2021	267000419	\$90.99
WAKE PRO 215	2011-2016	267000372	\$90.99
WAKE PRO 230	2009-2018	267000372	\$90.99
WAKE PRO 230	2019-2021	267000917	\$90.99

See your certified BRP dealer to match the right parts to your watercraft.

See your certified BRP dealer to match the right parts to your watercraft.

Performance

Give your SPARK an extra edge.



Anti-Debris Water Intake Grate

- (Not illustrated)
- Protects jet pump assembly and cooling system by blocking rocks and debris larger than 0.39" (10 mm).
 - Helps avoid damage and premature wear of the impeller and the wear ring.
 - Also helps reduce algae accumulation.
 - Recommended if watercraft usage includes frequent beaching or shallow and swift water riding.
 - Expect a slight performance reduction.

GTI, GTS and WAKE (2011-2019)
271001948
\$122.99

Stainless Steel Wear Ring

- Strong and durable stainless steel replacement wear ring.
 - Resists debris damage and corrosion.
 - Recommended if watercraft usage includes frequent beaching or shallow and swift water riding.
 - Direct replacement and easy press-in installation.
- Note: Please contact your nearest Sea-Doo dealer for suggested retail prices of those products.

GTI, GTS, WAKE, GTX, 130, 155 and 170 (2011 and up) 267000800 \$402.99	230 hp (2020 and up), 300 hp (2016 and up) 267001060 \$229.99
GTR 215 (up to 2016), RXT and GTX 260 (2009-2017), RXT and GTX 230 (2017-2018), RXT and GTX 215 (2009-2017) 296000431 \$402.99	SPARK 295100649 \$265.99



Top-Loader Intake Grate

- Intake grate with unique wing design for enhanced acceleration and top speed.
- Deep side rails improve straight line stability and handling.
- Durable black race coating protects from corrosion.
- IJSBA race legal.
- Pump Seal Kit (295100846) is required to fully unlock the benefits of the grate.

SPARK
295100845
\$324.99



Pump Seal Kit

- Location specific, molded inserts fill voids in intake grate shoe that can bleed air into pump causing cavitation.
- Allows for a positive seal for maximum performance.
- Required when installing the Top-Loader Intake Grate (295100845).

SPARK
295100846
\$104.99



Pro-Series Sponson Kit

- Race proven Pro-Series Sponsons will dramatically improve the handling of your watercraft with their superior blade and backing plate design.
- Includes a bulletproof mounting system that features a solid backing plate and four anchor points with billet aluminum inserts in sponson fins.
- Sponson depth is adjustable to control the amount of influence they have on the craft.
- Easy installation, uses original mounting studs.

SPARK
295100847
\$384.99

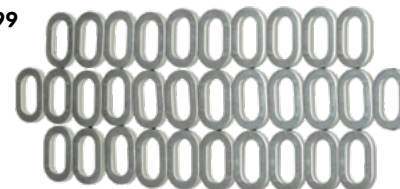


Deck Hardware Update Kits

- Sturdy stainless steel washer kit directly replaces the original plastic deck washers.
- Provides an awesome cosmetic upgrade along with increased durability.
- Precision machined washers are electropolished, providing excellent fit and finish.
- A must for repeatedly removing and replacing your deck for regular maintenance and inspection.

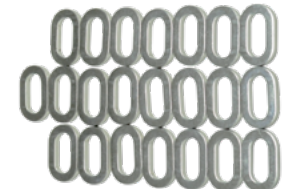
Front and Rear Deck

• Includes 31 washers for front and rear deck, plus one extra washer.
SPARK
295100849
\$82.99



Main Deck

• Includes 22 washers for main (center) engine access deck, plus one extra washer.
SPARK
295100848
\$72.99



Maintenance

Genuine parts that set the standard

With Sea-Doo parts, you get the peace-of-mind of a full one-year warranty. That's whether they're installed by you or your authorized BRP dealer. And if they're installed by your dealer, labor is covered too.



Maintenance

Choose from products designed to make regular maintenance easy and keep your watercraft at its best.

Did you know...

- ✓ We recommend doing an oil change every year at the end of the season when winterizing or after every 100 hours of use, whichever comes first. This will help increase the longevity of your vehicle.
- ✓ Over time, engine oil breaks down and wears out, making it less effective at lubricating critical engine components and absorbing friction heat.
- ✓ Plus, our ultra-convenient oil change kits already include the right parts and the right amount of oil based on your vehicle's maintenance needs. Taking care of your Sea-Doo has never been easier.
- ✓ Changing your oil as recommended is a practice you'll value for a long time.

XPS 4T 5W-40 Synthetic Blend Oil Change Kit

- Ultra-convenient "all-in-one" oil change kit saves time and money.
- Includes XPS Synthetic Blend Oil, oil filter, o-rings and washer.

779250 · Rotax 900 ACE engine
779251 · Rotax 1500 cc or more engine



Note: Please contact your nearest dealer for suggested retail prices of oil-based products.

*Installed by dealer

NGK[†] Spark Plugs

• BRP dealers carry the full line of premium NGK Spark Plugs for Sea-Doo watercraft.

DCP-R8E	KR9E-G	CR8EB
707000246	296000421	415129403
\$5.99	\$11.99	\$7.99



Oil Filter

• Ask your certified BRP dealer to match the right parts to your watercraft.

420956741	420956744	420956123
\$12.99	\$22.99	\$12.99



Oil Vaccum Tools

Drill Pump

- Safely and easily removes engine oil.
- Activate with a power drill.

295100244
\$34.99



Handpump with container

529035880
\$294.99





Why XPS oil is the perfect fit for your Rotax engine?

Anthony Radetic
P1 AquaX Sportsman of the year



Just like you count on Sea-Doo to help you make the most of every adventure, you can trust XPS to ensure the long-lasting performance and durability of your Rotax engine.

Ultimate performance

Engineered to match the advanced performance of Rotax engines.

Unmatched reliability

Get the most out of every mile on every ride.

Made for this

Developed with Rotax engines to deliver the best performance and lubrication in all conditions.

XPS oil has undergone rigorous testing in the harshest marine scenarios to prove itself, and this year will be used by many Sea-Doo racers including P1 AquaX Sportsman of the Year and Wounded Warrior **Anthony Radetic**, and Multi-National and World Champion **Erminio Iantosca**.

Visit the sea-doo.com Parts & Maintenance section to see the full line of XPS lubricants.

Engine Oils

Get true XPS peace of mind



Engine Oils

XPS 4T 5W-40 Synthetic Blend Oil

- Designed for high-performance off-road, on-road and PWC 4-stroke engines, including turbo or supercharged powersports engines.
- Formula with premium antiwear and anti-corrosion additives.
- Provides superior engine and transmission protection against rust and corrosion even in extreme conditions.

779133 · 1 quart (0.946 L)

779134 · 1 US gal. (3.785 L)

XPS 2T PWC Synthetic Blend Oil

- Designed for all fuel injection, carbureted, oil injection or premix 2-stroke personal watercraft.
- Provides low smoke, easy cold starting.
- Ensures maximum protection against corrosion and wear by keeping engine parts lubricated and clean.

779465 · 1 quart (0.946 L)

779466 · 1 US gal. (3.785 L)

XPS 2T Racing Synthetic Oil

- Specially designed for high performance or racing engines.
- Top-performing synthetic oil is formulated with a highly evolved additive package that includes performance enhancing esters.
- Withstands extreme operating temperatures, high RPM and heavy loads to deliver competition-level engine protection.
- Use in high performance 2-stroke engines.

779180 · 1 quart (0.946 L)

779181 · 1 US gal. (3.785 L)

4T 5W-40 Synthetic Blend Oil Change Kit

- Ultra-convenient "all-in-one" oil change kit saves time and money.
- Includes XPS Synthetic Blend Oil, oil filter, o-rings and washer.

Rotax 900 ACE engine

779250

Rotax 1500 cc or more engine

779251



Note: Please contact your nearest dealer for suggested retail prices of oil-based products.

Functional Fluids

Extended Life Pre-Mixed Coolant

- Antifreeze/Coolant contains the correct dilution and the necessary additives to prevent corrosion and inhibit cavitation in BRP cooling systems.
- Long-life, 5-year formula specially formulated for BRP vehicles.
- Superior heat transfer.
- Ideal replacement for vehicles that normally use a 2-year antifreeze/coolant (green).
- 5 years (orange).

779150 · 1 quart (0.946 L)
\$11.99



Lubricants

Synthetic Grease

- Recommended for marine applications.
- This synthetic grease provides the best wear protection and water resistance available.

779162 · 14 oz. (400 g)
\$25.99



Synthetic Jet Pump Oil

- Synthetic Jet Pump Oil uses a unique combination of synthetic base stocks and additives that allow higher loads, superior shear stability and reduced oxidation compared to other synthetics and conventional API GL-5 oils.
- Recommended for use in Sea-Doo jet pump requiring oil.

779221 · 6 fl. oz. (178 ml)
\$20.99



Triple-Guard⁺ Marine Grease

- This tough grease stays in place and is unaffected by vibration, salt water or cold temperatures.
- Reformulated for high water resistance and improved adhesion to metal.
- Won't swell seals, packing or o-rings.
- Totally waterproof to prevent water wash-off.

296000329 · 8 oz. (227 g)
\$7.99



Maintenance Products

Anti-Corrosive Lubricant

- Multipurpose lubricant that can also be used to prevent rust, corrosion and moisture intrusion.
- It contains extreme pressure additives that work as an all-around lubricant for just about anywhere lubrication is needed.

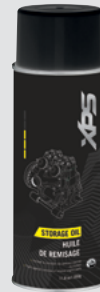
779167 · 14 oz. (400 g)
\$14.99



Storage Oil

- High-performance fogging oil designed to protect internal engine parts from rust and corrosion.
- It coats engine internals throughout the whole storage period and is burned away through combustion when engine is started.
- Protects engines during non-use or storage.
- Burns complete upon start-up.

779173 · 12 oz. (350 g)
\$12.99



Fuel Treatment Carbon Free

- Combination of a fuel treatment and a fuel system cleaner that can be used periodically to restore lost starting or throttle performance, as well as maintain fuel system integrity and keep internal engine parts clean.
- It treats fuel for storage and addresses the moisture problems inherent in today's Ethanol-blended fuels, keeping ferrous and soft metal parts clean and free of corrosion.
- Uses patented, state-of-the-art additives.
- Cleans valves, sticky rings and combustion chamber.

779169 · 12 fl. oz. (355 ml)
\$9.99



Anti-Corrosion Spray

- Heavy, waxy coating specifically designed to protect your engine from rust and corrosion.
- Highly effective against corrosion caused by salt water and salt spray.

219700304 · 11 oz. (312 g)
\$13.99



Fuel Stabilizer

- Ethanol-compatible and will stabilize fuel in your tank to keep it from breaking down and causing hard starting, throttle hesitation and poor run quality.
- Ethanol attracts moisture, and this product contains powerful anti-corrosion additives to protect fuel system components.
- Prevents problems associated with E10 fuels.

779171 · 8 fl. oz. (236 ml)
\$12.99



Fuel Treatment Carburetor Cleaner

- Complete fuel treatment specially formulated to prevent small engine problems caused by Ethanol-blended fuels.
- It removes fuel system gum and varnish that may have accumulated during storage, stabilizes fuel against breakdown for 12 months or more, and adds corrosion protection from moisture for short and long-term storage.
- It also helps restore throttle response and easy starting.
- It can be used periodically to maintain fuel system integrity, keep carburetor jets clean, and also combat moisture problems caused by Ethanol-blended fuels to keep ferrous and soft metal parts clean and free of corrosion.

779172 · 12 fl. oz. (355 ml)
\$9.99



Cleaning

Cleaning products

Sea-Doo® Hull Cleaner

- Eco-Friendly formula for use on all Sea-Doo® hulls including acrylic surfaces.
- Effective on waterline stains, algae, rust, scum and more, it dissolves grime without heavy scrubbing.
- Deep cleaning formula is safe on acrylic surfaces, fiberglass, gelcoat and painted surfaces of your hull.

779309 · 22 fl. oz. / 650 ml



All Purpose Cleaner & Degreaser

- Works above and below deck on tough stains, grease and grime.
- Effective on vinyl for mold and mildew too.
- This fast-acting phosphate free eco-friendly formula is safe on all boat surfaces.

779313 · 22 fl. oz. / 650 ml

779314 · 2 QT / 1.89 L



Multi-Surface & Glass Cleaner

- Waterless all-purpose polymer cleaning solution for vinyl, paint, glass, plastic and chrome.
- Removes grime easily and leaves a thin protective layer, making future cleaning easier.
- Dries quickly with no streaks or marks left behind.

779316 · 22 fl. oz. / 650 ml



Note: Please contact your nearest dealer for suggested retail prices of oil-based products.



Cleaning

Wash & Wax

- One step wash and wax is eco-friendly and biodegradable.
- Contains wax and polymers to leave a brilliant shine.
- Safe and effective for all boat surfaces including non-skid, vinyl and canvas.
- Low suds formula rinses easily.

779310 · 16 fl. oz. / 473 ml
779311 · 2 QT / 1.89 L



Vinyl & Plastic UV Protectant

- Powerful UV blockers protect boat surfaces.
- Leaves a clean, non-greasy, satin finish that restores color and luster and prevents fading and cracking.
- Perfect for synthetic and natural rubber, plus it works on fiberglass, gelcoat and most plastic.
- Anti-static properties repel dust and grime.

779317 · 16 fl. oz. / 473 ml



Wax & Sealant Nano-Polymer

- Premium polish and sealant for gelcoat, fiberglass and painted surfaces using nanotechnology for surface penetration and adhesion.
- Superior blend of two cross-linked polymers, pure wax and silicone for the ultimate shine and long-lasting protection.
- Unmatched resistance to marine contaminants like UV rays, salt spray, water spots, bird droppings and insects.

779319 · 16 fl. oz. / 473 ml



Spray Wax with Polymer

- This nanotechnology approach combines polymers and wax for superior shine and protection that penetrates and adheres better to outperform other waxes.
- This premium product is perfect for acrylic surfaces, fiberglass, gelcoat, paint or plastic boat surfaces for a long-lasting protective barrier from the elements including the sun's UV rays.
- Safe to use even in direct sunlight.

779320 · 16 fl. oz. / 473 ml



Fabric Waterproofing

- Restores and preserves boat canvas and fabrics to keep them performing like new.
- Unique fluoropolymer formula restores water repellency, adds UV protection, stain protection and prevents color fading and premature aging of boat fabrics.
- Safe for natural and synthetic fibers, does not affect the fabric's feel, color or breathability.

779321 · 22 fl. oz. / 650 ml




Note: Please contact your nearest dealer for suggested retail prices of oil-based products.

Specifications

	REC LITE					RECREATION					
	SPARK®			SPARK® TRIXX™		GTI™		GTI™ SE			
Models	SPARK® 2UP - Rotax® 900 ACE™ - 60	SPARK® 2UP - Rotax® 900 ACE™ - 90	SPARK® 3UP - Rotax® 900 ACE™ - 90	SPARK® TRIXX™ 2UP	SPARK® TRIXX™ 3UP	GTI™ 90	GTI™ 130	GTI™ SE 130		GTI™ SE 170	
Colors	 Dazzling Blue & Manta Green * *Color only available with Rotax® 900 ACE™ - 90			 Quetzal & Manta Green		 White / Reef Blue		 NEW Neon Yellow & Ice Metal			
	 Orange Crush & Deep Black			 Lava Red & Deep Black				 Beach Blue Metallic & Lava Gray		 Ice Metal & Orange Crush	
Taglines	One-of-a-kind fun.			Playful trickster.		Style, stability and some serious fun.		More convenience and comfort for days of family fun.			
PACKAGE HIGHLIGHTS											
	<ul style="list-style-type: none"> Lightweight and playful platform Able to tow with most mid-size cars Up to 3 passengers <p>Convenience Plus Package (optional):</p> <ul style="list-style-type: none"> iBR® (Intelligent Brake & Reverse)* BRP Audio – portable system (optional with 3up Convenience Package only) Front storage bin kit Boarding step 			<ul style="list-style-type: none"> Lightweight and playful platform Able to tow with most mid-size cars Up to 3 passengers <p>TRIXX Package:</p> <ul style="list-style-type: none"> BRP Audio – portable system (optional) Extended Range VTS™ (Variable Trim System) Step wedges Handlebar with adjustable riser iBR® (Intelligent Brake & Reverse)* Exclusive coloration *Electronic brake, neutral and reverse. 		<p>Base Package:</p> <ul style="list-style-type: none"> iBR® (Intelligent Brake & Reverse) Swim platform with integrated LinQ™ system Large front storage Ergolock™ seat Watertight phone compartment 		<p>SE Package:</p> <ul style="list-style-type: none"> BRP Audio – premium system (Optional) Boarding ladder Ergolock touring seat 			<ul style="list-style-type: none"> Variable Trim System (VTS™) LinQ™ attachment system Large front storage
CAPACITY											
Riders	2	2	3	2	3	3		3			
Weight	352 lb / 160 kg	352 lb / 160 kg	450 lb / 205 kg	352 lb / 160 kg	450 lb / 205 kg	600 lb / 272 kg		600 lb / 272 kg			
Fuel	7.9 US gal / 30 L			7.9 US gal / 30 L		15.9 US gal / 60 L		15.9 US gal / 60 L			
Total storage	7 US gal / 27 L	7 US gal / 27 L		7 US gal / 27 L		40.3 US gal / 152.8 L		40.3 US gal / 152.8 L			
ROTAX ENGINE											
Rotax® engine	900 ACE™ - 60	900 ACE™ - 90		900 ACE™ - 90		900 ACE™ - 90	1630 ACE™ - 130	1630 ACE™ - 130		1630 ACE™ - 170	
Intake system	Naturally aspirated			Naturally aspirated		Naturally aspirated	Naturally aspirated	Naturally aspirated			
Displacement	899 cc			899 cc		899 cc	1,630 cc	1,630 cc			
Reverse system	Manual Reverse Kit (Accessory)	Electronic iBR® (Optional)		Electronic iBR®		Electronic iBR®	Electronic iBR®	Electronic iBR®			
Fuel type	87 octane			87 octane		87 octane	87 octane	87 octane			

Specifications

TOW SPORTS			TOURING			
	WAKE™	WAKE™ PRO	GTX ¹			GTX ¹ LIMITED
Models	WAKE™ 170	WAKE™ PRO 230	GTX ¹ 170	GTX ¹ 230	GTX ¹ 300	GTX ¹ LIMITED 300
Colors	 Malibu Blue & Neon Yellow	 Malibu Blue & Neon Yellow	 Beach Blue Metallic & Lava Grey	 NEW Eclipse Black & Orange	 NEW Eclipse Black & Orange	 Liquid Grey Metallic & Beach Blue
Taglines	Made to make the most of the wake.	Stability, power and music to tow like a pro.	Luxurious value and control are always in style.			The standard for touring performance.
PACKAGE HIGHLIGHTS						
	<ul style="list-style-type: none"> • BRP Audio – premium system (optional) • Boarding ladder • Watertight phone compartment • Large front storage <p>WAKE™ Package:</p> <ul style="list-style-type: none"> • LinQ™ retractable ski pylon • Speed-based ski mode • Removable wakeboard rack • WAKE™ graphics 	<ul style="list-style-type: none"> • BRP Audio – premium system (optional) • Boarding ladder • Watertight phone compartment • Large front storage <p>WAKE™ Package:</p> <ul style="list-style-type: none"> • LinQ™ retractable ski pylon • Speed-based ski mode • Removable wakeboard rack • WAKE™ graphics 	<p>Base Package:</p> <ul style="list-style-type: none"> • NEW iDF Intelligent Debris Free system (optional 170 & 230 only) • BRP Audio – premium system (Optional) • Watertight phone compartment 	<ul style="list-style-type: none"> • LinQ™ attachment system • Large swim platform • Boarding ladder • Direct-access front storage 	<ul style="list-style-type: none"> • BRP Audio – premium system • NEW large panoramic 7.8" wide color LCD display • NEW iDF Intelligent Debris Free Pump System • Ergolock touring seat with knee pads • Large swim platform with LinQ™ attachment system • Direct-access front storage <p>Limited Package:</p> <ul style="list-style-type: none"> • USB Port, watercraft cover, storage bin organizer, depth finder and more. 	
CAPACITY						
Riders	3	3	3			3
Weight	600 lb / 272 kg	600 lb / 272 kg	600 lb / 272 kg			600 lb / 272 kg
Fuel	15.9 US gal / 60 L	18.5 US gal / 70 L	18.5 US gal / 70 L			18.5 US gal / 70 L
Total storage	40.3 US gal / 152.8 L	26.1 US gal / 98.9 L	26.1 US gal / 98.9 L			26.1 US gal / 98.9 L
ROTAX ENGINE						
Rotax® engine	1630 ACE™ – 170	1630 ACE™ – 230	1630 ACE™ – 170	1630 ACE™ – 230	1630 ACE™ – 300	1630 ACE™ – 300
Intake system	Naturally aspirated	Supercharged with external intercooler	Naturally aspirated	Supercharged with external intercooler		Supercharged with external intercooler
Displacement	1,630 cc	1,630 cc	1,630 cc		1,630 cc	1,630 cc
Reverse system	Electronic iBR®	Electronic iBR®	Electronic iBR®		Electronic iBR®	Electronic iBR®
Fuel type	87 octane	87 octane	87 octane		91 octane	91 octane

Specifications

	SPORT FISHING		PERFORMANCE	
	FISH PRO™	GTR™	RXP®-X®	RXT®-X®
Models	FISH PRO™ 170	GTR™ 230	RXP®-X® 300	RXT®-X® 300
Colors	 Night Green	 Eclipse Black & Neon Yellow	 Premium Midnight Purple	 Millennium Yellow
	 White & Gulfstream Blue		 Millennium Yellow	 Premium Midnight Purple
Taglines	A new perspective on sport fishing.	Accessible power and performance.	Race-ready performance watercraft, reimagined.	The ultimate off-shore performance watercraft.
PACKAGE HIGHLIGHTS				
	Fishing Package: <ul style="list-style-type: none"> • NEW iDF Intelligent Debris Free system (standard) • Garmin® ECHOMAP® Plus 62cv Fish Finder • LinQ™ fishing cooler (13.5 US gal / 51 L) • Extended rear platform with second LinQ™ attachment system • 5 x fishing Rod holder • BRP Audio – premium system (Optional) • Ergolock™ fishing seat 	Base Package: <ul style="list-style-type: none"> • BRP Audio – premium system (Optional) • LinQ™ attachment system • Watertight phone compartment • Large front storage • Variable Trim System (VTS™) 	X Package: <ul style="list-style-type: none"> • Ergolock™ R Features: 1-up performance seat with adjustable rear saddle, low profile handle bars, double angled footwedges, tacky zones, deep knee pockets • NEW T3-R hull design • NEW X-sponsons • BRP Audio – premium system (optional) • NEW watertight phone compartment • Polished high-performance impeller • Large swim platform with LinQ™ attachment system 	X Package: <ul style="list-style-type: none"> • BRP Audio – premium system (now standard) • Launch control • Extended Variable Trim System (VTS™) • Ergolock™ racing seat with knee pads • X-sponsons • Direct-access front storage
CAPACITY				
Riders	3	3	2	3
Weight	600 lb / 272 kg	600 lb / 272 kg	400 lb / 182 kg	600 lb / 272 kg
Fuel	18.5 US gal / 70 L	15.9 US gal / 60 L	18.5 US gal / 70 L	18.5 US gal / 70 L
Total storage	39.6 US gal / 149.9 L	42.5 US gal / 160.8 L	40.6 US gal / 153.7 L	26.1 US gal / 98.9 L
ROTAX ENGINE				
Rotax® engine	1630 ACE™ – 170	1630 ACE™ – 230	1630 ACE™ – 300	1630 ACE™ – 300
Intake system	Naturally aspirated	Supercharged with external intercooler	Supercharged with external intercooler	Supercharged with external intercooler
Displacement	1,630 cc	1,630 cc	1,630 cc	1,630 cc
Reverse system	Electronic iBR®	Electronic iBR®	Electronic iBR®	Electronic iBR®
Fuel type	87 octane	87 octane	91 octane	91 octane

Build your dream Sea-Doo! sea-doo.com/build

EXPLORE AN ENTIRE WORLD OF ADVENTURE WITH ALL OF OUR BRP PRODUCTS. BRP.COM




ski-doo LYNX SEA-DOO CAN-AM ROTAX ALUMACRAFT Manitou Evinrude

LIVE THE
SEA-DOO[®]
LIFE



// 2021 | Genuine Parts | Accessories | Apparel

 ©2020 Bombardier Recreational Products Inc. (BRP). All rights reserved. ®, TM and the BRP logo are trademarks of BRP or its affiliates.

A BRP BRAND

